



MSME TECHNOLOGY CENTER
INDO GERMAN TOOL ROOM , AURANGABAD



INDO GERMAN TOOL ROOM, AURANGABAD



WELCOME



MSME TECHNOLOGY CENTER INDO GERMAN TOOL ROOM , AURANGABAD



ISO 9001:2008



ISO 29990:2010



ISO 14001:2004



BS OHSAS 18001:2007



ISO/IEC17025:2005

ISO 50001:2011



CERTIFICATIONS



MSME TECHNOLOGY CENTER INDO GERMAN TOOL ROOM , AURANGABAD



Services Offered

**MSME Tool Rooms act as
Center of Technology-Transfer
to assist SMEs, in the fields of:**

**Design and
Manufacture using
Latest Technology**

Skill Development

Consultancy



MSME TECHNOLOGY CENTER INDO GERMAN TOOL ROOM , AURANGABAD



RESOURCES

A] CNC 5 Axis Machining Centre:

HARMELE-B 300

Working Range: X 350, Y550, Z 200, U 150, V100



B] CNC Turn Mill:

HAAS-ST 20 SSY

Working Range: DIA 200, Z 500



C] CNC High Precision Lathe:

SCHAUBLIN-125 CCN

Working Range: DIA:360 Z 300





RESOURCES

D] CNC Machining Centre:

**Hartford
HB2150SG**

- Working Range: X 2100, Y1500, Z 800

**Deckel Maho
DMC 100 V**

- Working Range: X 1000, Y 800, Z 550 MM

**Deckel Maho
DMC 70 V Hi-dynamic**

- Working Range: X 700, Y 550, Z 500 MM

**Deckel Maho
DMC 70 V**

- Working Range: X 700, Y 550, Z 500 MM

**HAAS
VM6**

- Working Range: X 1626, Y 813, Z 762 MM

**HAAS
VF2SS**

- Working Range: X 762, Y = 406, Z 508 MM

**HAAS
VF6**

- Working Range: X = 850, Y = 500, Z 500 MM





RESOURCES

E] CNC Milling Machines :

**Makino
V-33**

**Mikron
UME 710**

**Mikron
WF 52D**

**Working
Range:**

**X 600, Y 400,
Z 350 MM**

**Working
Range:**

**X 710, Y 630, Z
500 MM**

**Working
Range:**

**X 710, Y 560,
Z 500 MM**



F] CNC Wire Cut :

Charmilles Robofil 510

Charmilles Robofil 300

Charmilles Robofil 290

Agie Charmilles FL 440 CCS

Electronica Ultracut S1

Electronica Ecocut



RESOURCES

G] CNC Spark Erosion :

Charmilles
Roboform 40

- Working Range: X 500, Y 400, Z 450 MM

Agietron
Advance

- Working Range: X 500, Y 350, Z 350 MM

Charmilles
Roboform 20

- Working Range: X 300, Y 250, Z 250 MM

Mitsubishi
EA-30

- Working Range: X 700, Y 500 , Z 350 MM



H] CNC Lathe

Honor Vertical
Turret Lathe

- Dia. 1000 mm

Gildemeister
CTX 400 E

- Dia. 250 mm

HAAS SL-20

- Dia. 210 mm



MSME TECHNOLOGY CENTER INDO GERMAN TOOL ROOM , AURANGABAD



RESOURCES

I] Jig Boring Hauser B-3 DR:

Working Range: X 400, Y 250, Z 450 MM



J] CNC Surface Grinding

BLOHM CNC SG Plain Top HP 408

- Working Range: X 900, Y 550, Z 360 MM
- Control: SINUMERIK 840 G



K] CNC Cylindrical Grinding

STUDER CNC CG Grinding S33

- Working Range: 175 x 650 MM
- Control: FANUC Oi-TD





MSME TECHNOLOGY CENTER INDO GERMAN TOOL ROOM , AURANGABAD



RESOURCES

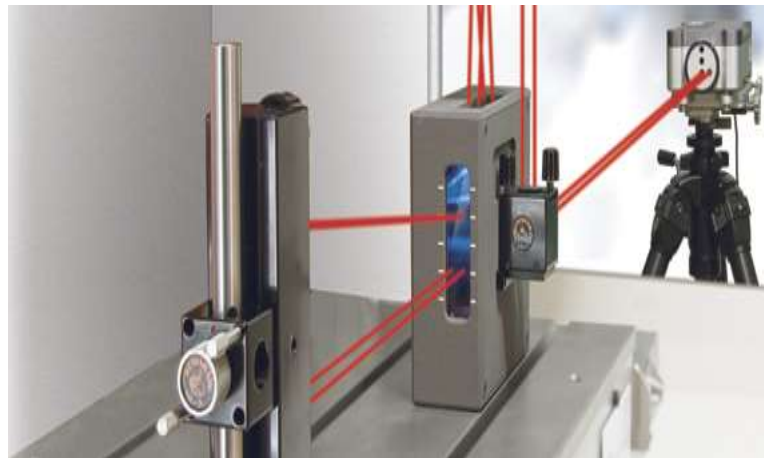
L] CMM :

Carl-Zeiss: Prismo
(Range 700 X 900 X 500 MM)

Brown & Sharp: Hexagon Global
(Range 500 X 700 X 500 MM)



Carl-Zeiss – Prismo



Laser Calibration **RENISHAW**
apply innovation™

M] Laser Calibration System (Calibration of
CNC Machine linear movement accuracies)

Renishaw's XL-80 For Linear Measurement



RESOURCES

NEW MACHINES UNDER TCSP

CNC Wirecut Machine :Model: Cut 400 Sp:

- Maximum Workpiece Dimensions: 1450 x 900 x 510 mm
- X –Y-Z Travel: 800 x 550 x 510 mm
- U X V Travel: 800 x 550 mm
- Maximum work piece Weight:3000 Kg
- Integrated Collision Protection



CNC Jig Grinding Machine: Model Hauser H 45:

- Range of Adjustment X, Y: 700 x 500 mm.
- Vertical Adjustment of Grinding Head: 500 mm
- Clearance between upright columns 750 mm
- Taper Grinding Max 90 deg.
- Maximum work piece Weight:500 Kg
- Integrated Collision Protection

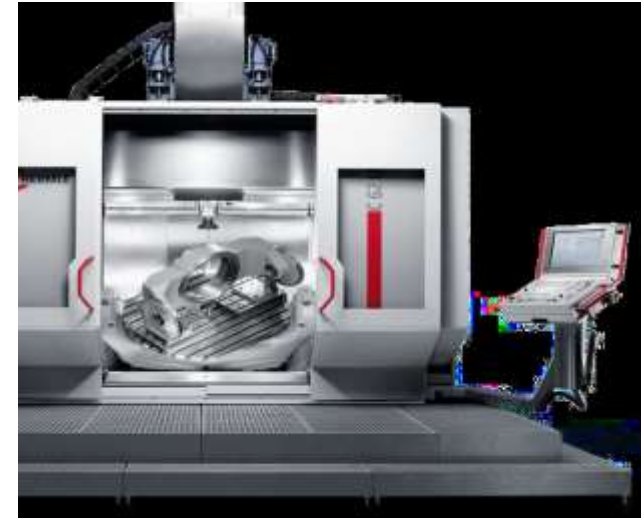


RESOURCES

NEW MACHINES UNDER TCSP

CNC 5 Axis Mill Turn: Model: C62 MT:

- Traverse path: 1200 x 1300 x 900 mm
- Latest Controller: Heidenhain: iTNC 640
- Max Milling Table Load: 2500 Kg
- Max Turning Table Load: 1500 Kg
- **Proposed Commissioning : May 2017**



PRECISION CNC 5 Axis: Model: C32 U:

- Traverse path: 650 x 650 x 500 mm
- Body: dia. 650 / H 420
- Latest Controller: Heidenhain: iTNC 640
- Max Table Load: 1000 Kg
- **Proposed Commissioning : May 2017**



PRODUCTION





MSME TECHNOLOGY CENTER
INDO GERMAN TOOL ROOM , AURANGABAD



RAPID PROTOTYPING

RESOURCES

3D MANUFACTURING (METAL)

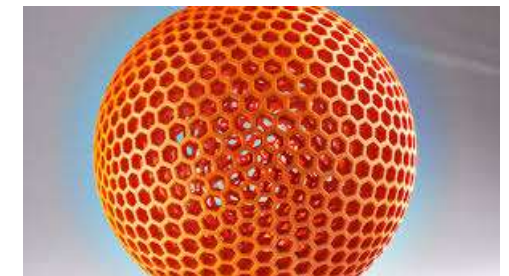
EOSINT M 280 DMLS



- Manufacturing solution proven in Tooling , Aerospace
- Machine has open architecture, can run 3rd party materials as well.
- Building Volume 250 x 250 x 325 mm
- 400 W fibre Optic laser

Metal powder materials

Material name	Material type	Typical applications
Maraging Steel MS1	18 Mar 300 / 1.2709	Die Casting Dies / Injection moulding series tooling; engineering parts
Nickel Alloy IN718	Inconel™ 718, UNS N07718, AMS 5662, etc.	Functional prototypes & series parts; high temperature turbine parts etc.
Titanium Ti64	Ti6Al4V light alloy	Functional prototypes and series parts; aerospace, motor sport etc.
Aluminium AISi10Mg	AlSi10Mg light alloy	Functional prototypes and series parts; engineering, automotive etc.

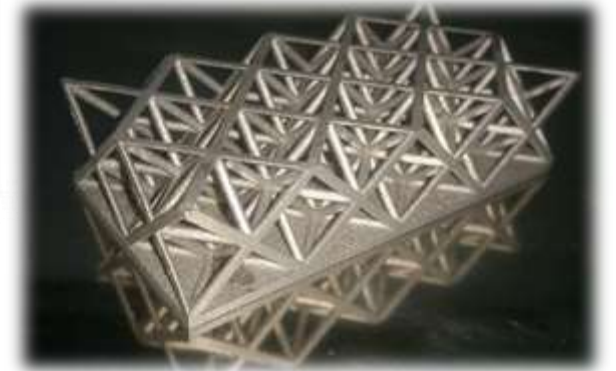
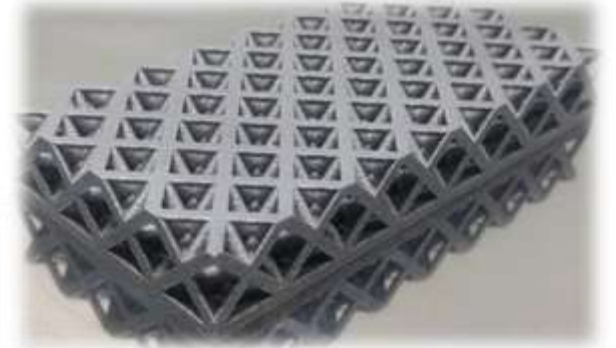




MSME TECHNOLOGY CENTER
INDO GERMAN TOOL ROOM , AURANGABAD



3DM METAL – COMPONENTS



RESOURCES

3D MANUFACTURING (PLASTIC)

SLS Technology is useful for

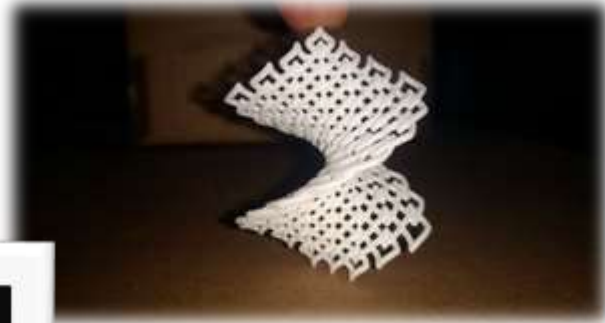
- Polyamide like Nylon 11 & Nylon 12
- Glass filled polyamide
- Polystyrene material for investment casting
- Materials: P396
 - EOS ALUMIDE®
 - EOS PA 2200/2201
 - EOS PA 2202 black
 - EOS PA 2210 FR
 - EOS PA 3200 GF

EOS P 396 SLS





3DM PLASTICS – COMPONENTS



RESOURCES

3D SCANNER: MODEL COMET L3D



Camera Resolution	2448x 2050
Measurement Volume in mm	45 field of view: 45x 38x30 75 field of view: 74x62x40 250 field of view: 260x215x140 500 field of view : 480x400x250
3D Point Distance in μm	field of view : 45/75/250/500
Fastest Measuring Time	2
Sensor Positioning	Tripod or sensor stand With manual rotation and tilt axis
Automatic Object Positioning	Rotation table (COMET rotary)
Available Software	STEINBICHLER COMET plus

❖ Applications

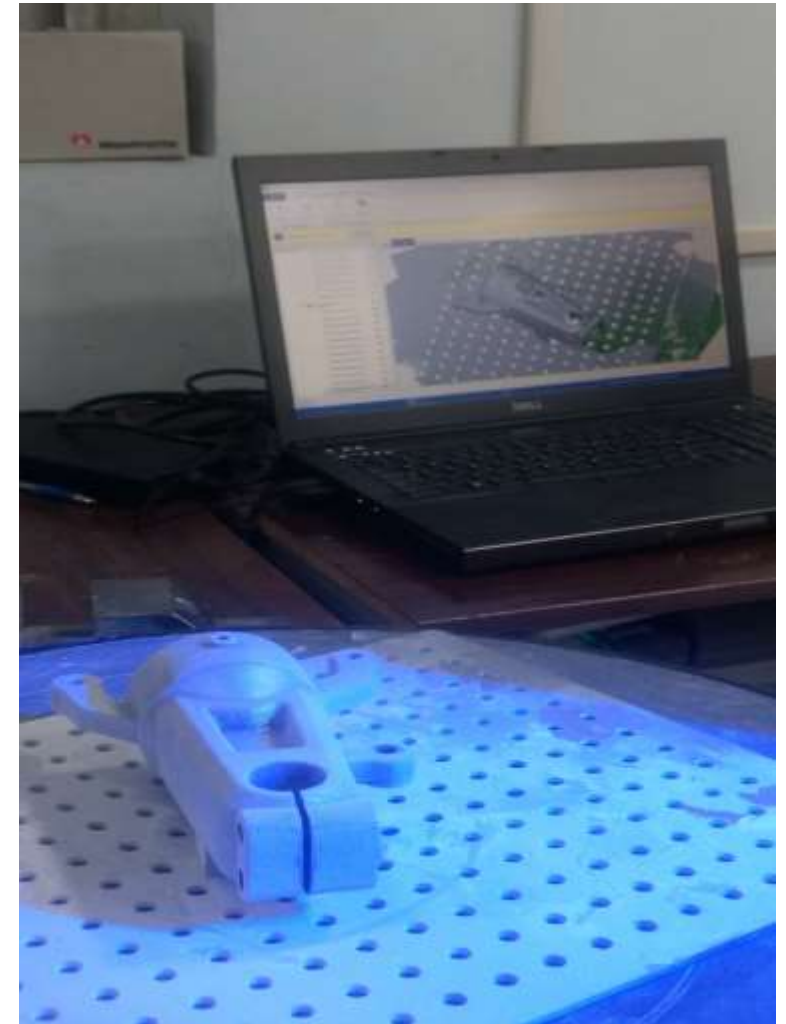
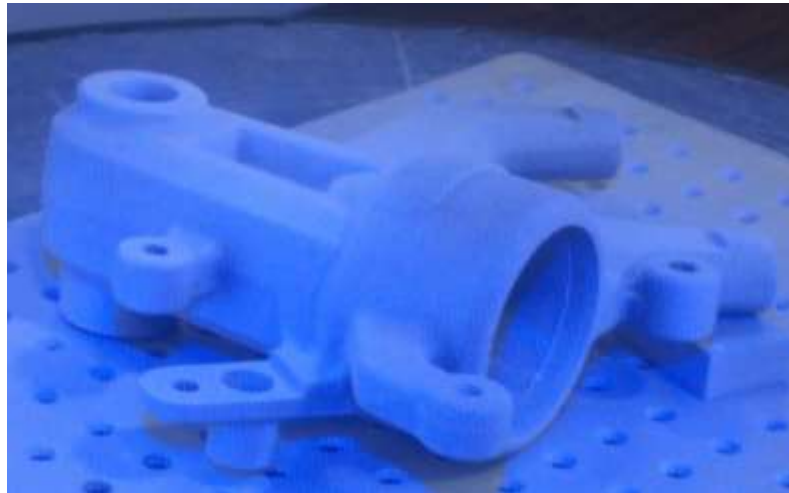
- Reverse Engineering
- Scanning of Component
- Inspection of Die casting Dies, Moulds.
- Scanning of Non Auto Segment Parts
- Parts Scanned-
- Crank Case, Draw Punch for Kitchen Sink, etc.



MSME TECHNOLOGY CENTER
INDO GERMAN TOOL ROOM , AURANGABAD



3D SCANNER – COMPONENTS

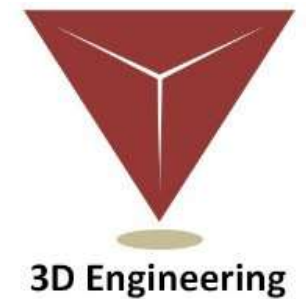




MSME TECHNOLOGY CENTER INDO GERMAN TOOL ROOM , AURANGABAD



CUSTOMERS





DESIGN, DEVELOPMENT & MANUFACTURING OF :

- PRESS TOOLS
- PLASTIC MOULDS
- DIE CASTING DIES
- SPECIAL PURPOSE MACHINES
- JIGS & FIXTURES
- GAUGES
- REVERSE ENGINEERING
- PRODUCT DEVELOPMENT





MSME TECHNOLOGY CENTER
INDO GERMAN TOOL ROOM , AURANGABAD



PRESS TOOLS



MSME TECHNOLOGY CENTER INDO GERMAN TOOL ROOM , AURANGABAD



CUSTOMERS





MSME TECHNOLOGY CENTER
INDO GERMAN TOOL ROOM , AURANGABAD

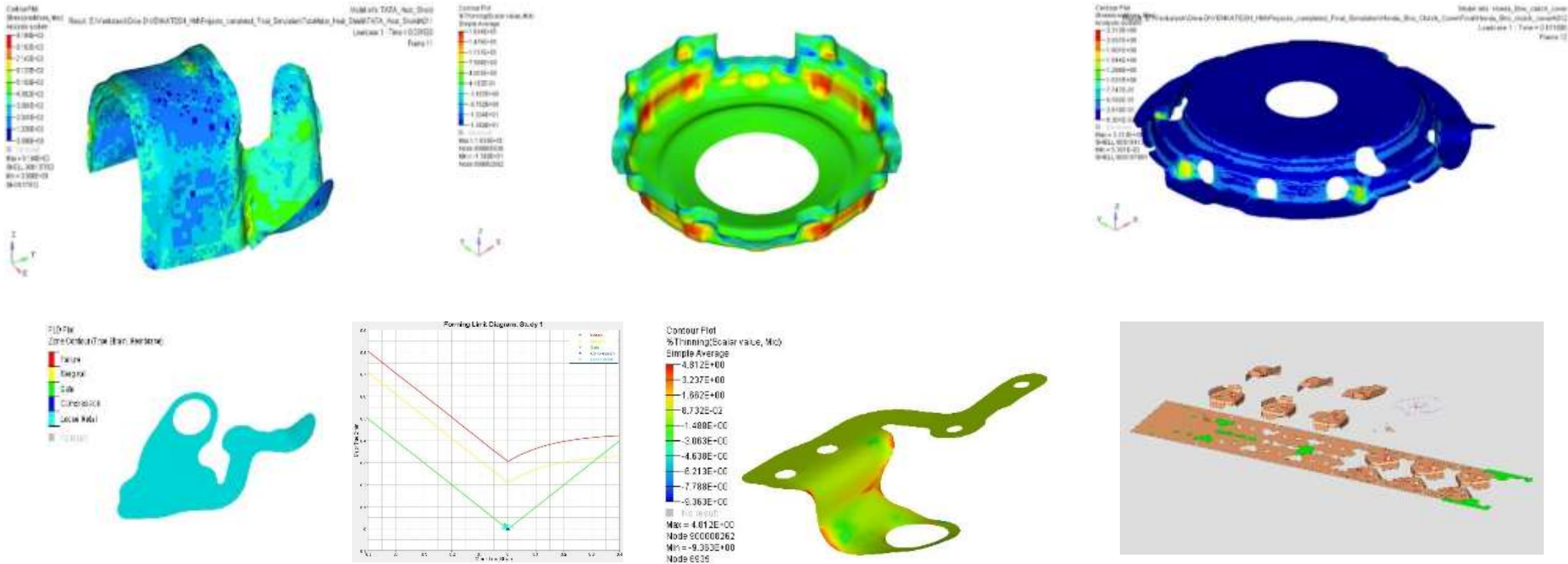


DEVELOP EXPERTISE IN PRESS TOOL DEVELOPMENT THROUGH SERVING VARIOUS AUTO COMPONENT MANUFACTURERS IN INDIA.

S.No	Auto - Part	OEM
1.	Auto Clutch Parts	Maruti Suzuki, TATA Motors, Honda, Toyota, General Motors, Valeo
2.	Auto Engine Parts	Volkswagen, Honda.
3.	Car body Panel parts	Volkswagen, Fiat.
4.	MLS Gaskets	Fiat, Volvo, Piaggio, Nissan, Mahindra & Mahindra, Honda
5.	Heat shield	General Motors, Ford Motor India, TATA Motors, Renault

- **DIE DESIGN THROUGH SYSTEMATIC APPROCH STARTS FROM SIMULATION TO VALIDATION.**
- **OPTIMISED DESIGN THROUGH CONTINEOUS LEARNING NEW TECHNOLOGY UPDATES.**

Simulation output from Hyperform Software



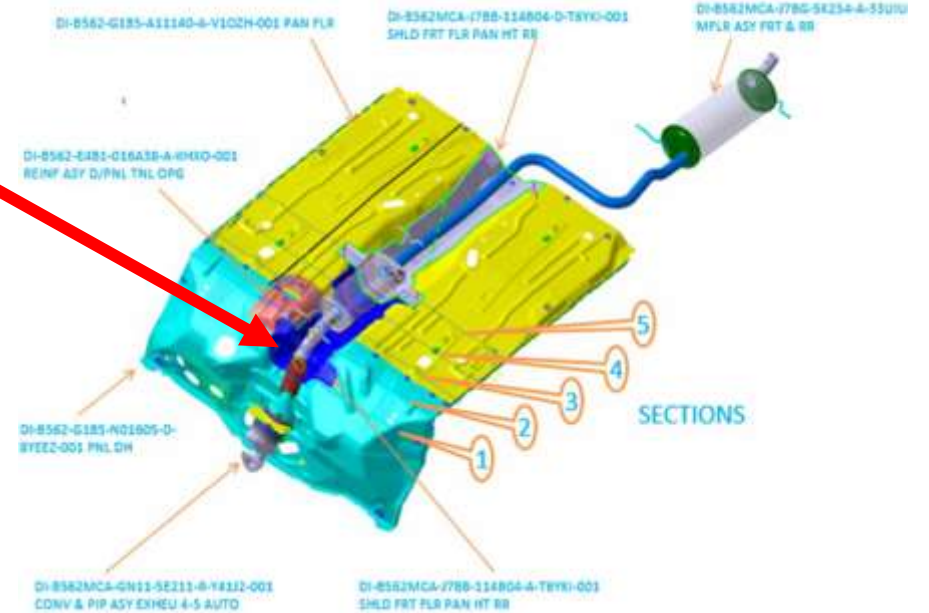
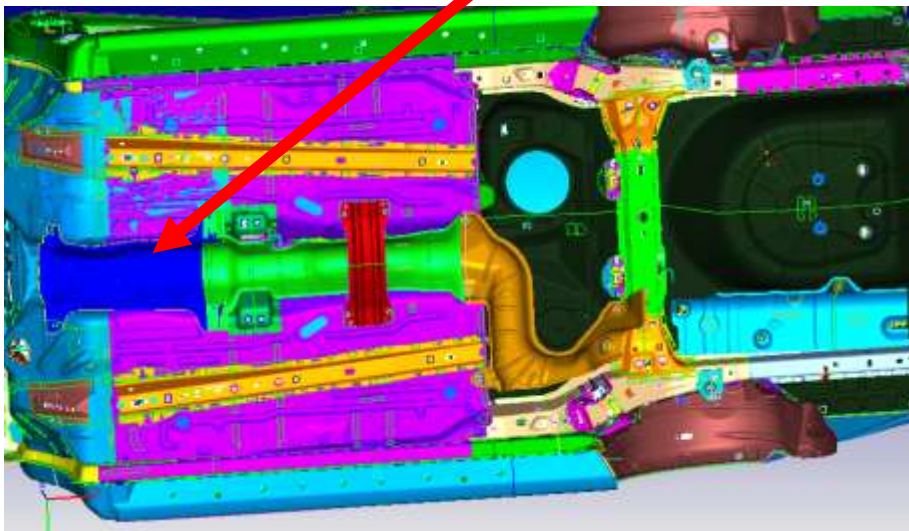
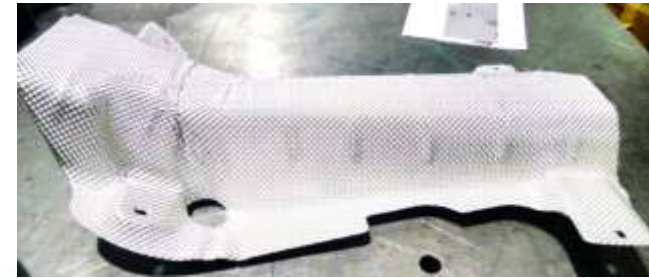
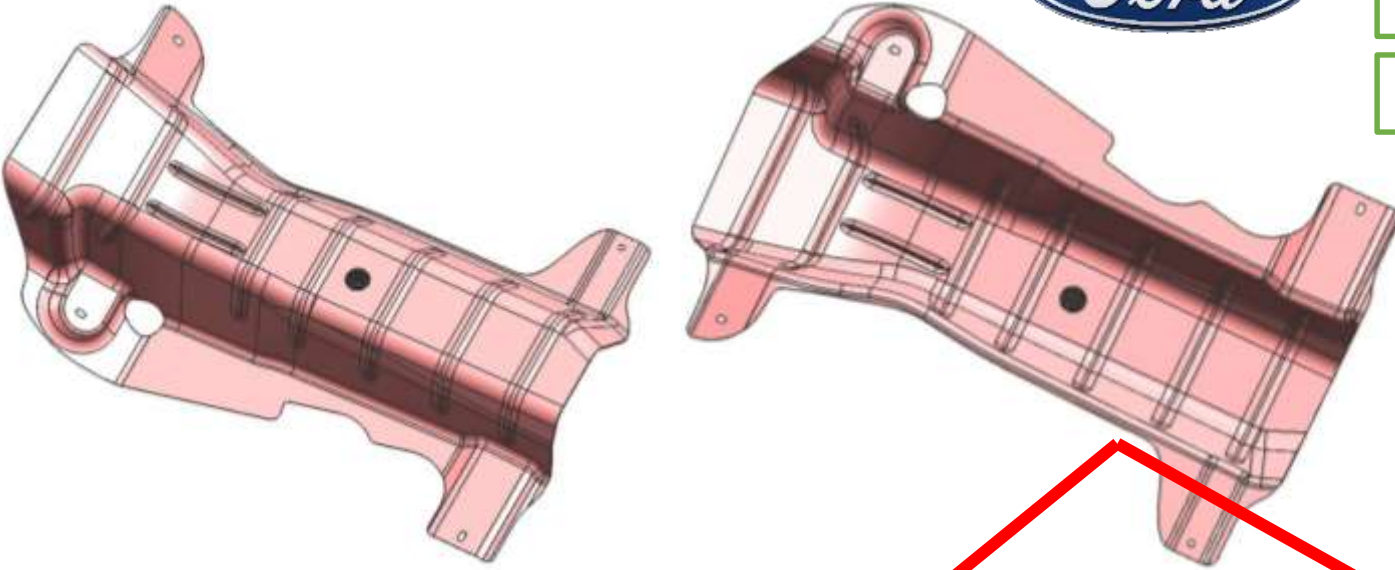


MSME TECHNOLOGY CENTER INDO GERMAN TOOL ROOM , AURANGABAD



Vehicle : Ford Aspire Facelift (launch in 2018)

Part Name :-Shield front floor pan Heat Shield.





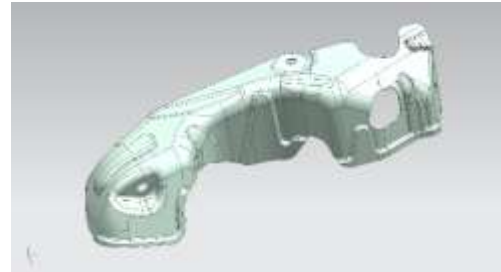
MSME TECHNOLOGY CENTER INDO GERMAN TOOL ROOM , AURANGABAD



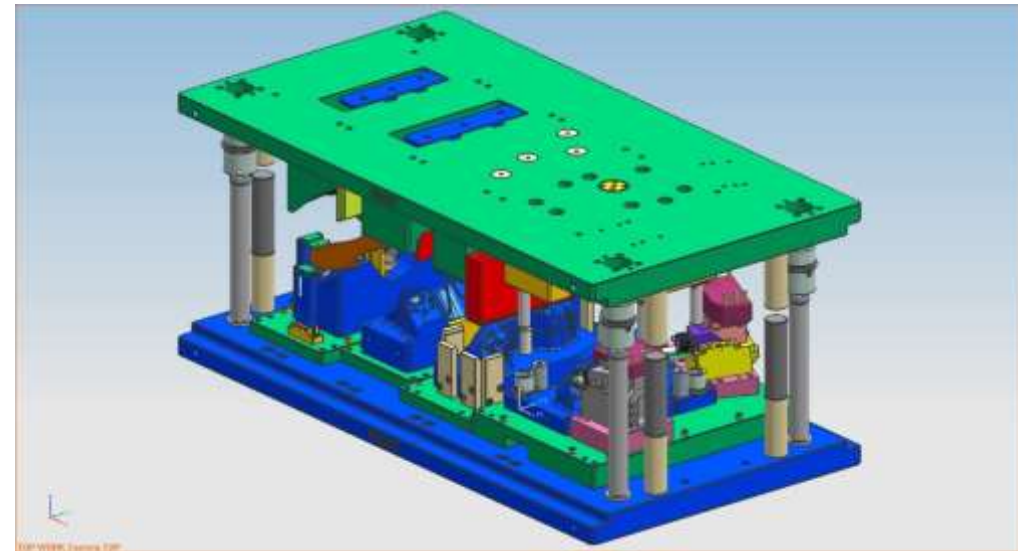
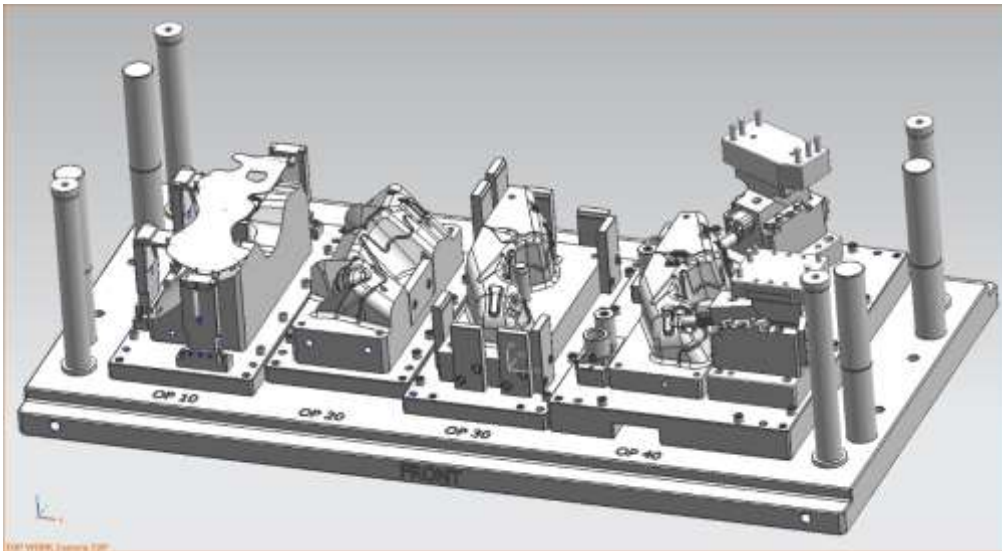
Part Name :-Heat Shield for General Motors.

Description:-

- 1-Outer Skin- Aluminum silicon coted skin 0.4mm thickness.
- 2-Insulation-Elrotherm 300 , 1.0mm thickness.
- 3-Inner Aluminum silicon coted skin 0.4mm thickness.



Tool design:-Heat Shield Tool Assembly





MSME TECHNOLOGY CENTER INDO GERMAN TOOL ROOM , AURANGABAD



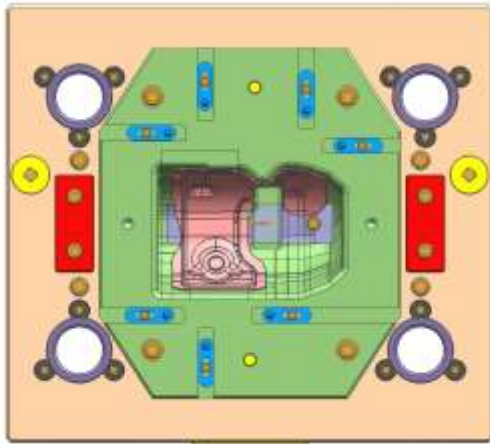
Part Name :-Heat Shield Turbo Charger.

Description:-

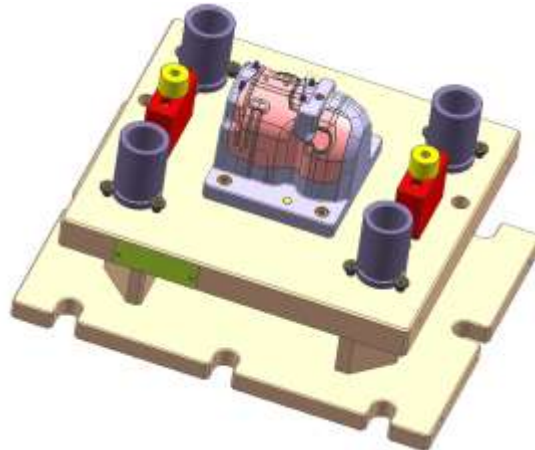
- 1-Outer Skin- Aluminum silicon coted skin 0.4mm thickness.
- 2-Insulation-Elrotherm 300 , 1.0mm thickness.
- 3-Inner Aluminum silicon coted skin 0.4mm thickness.



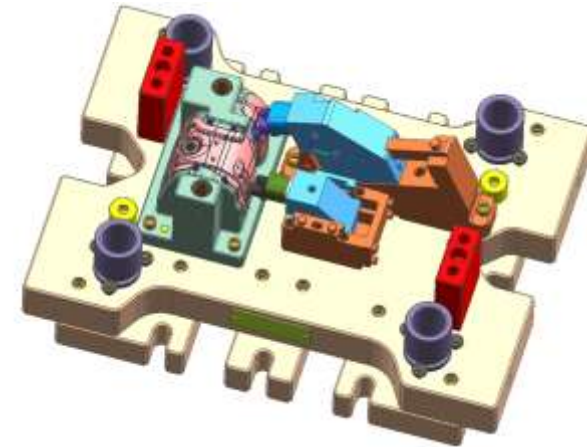
Tool design:-Heat Shield Tool Assembly



Forming tool



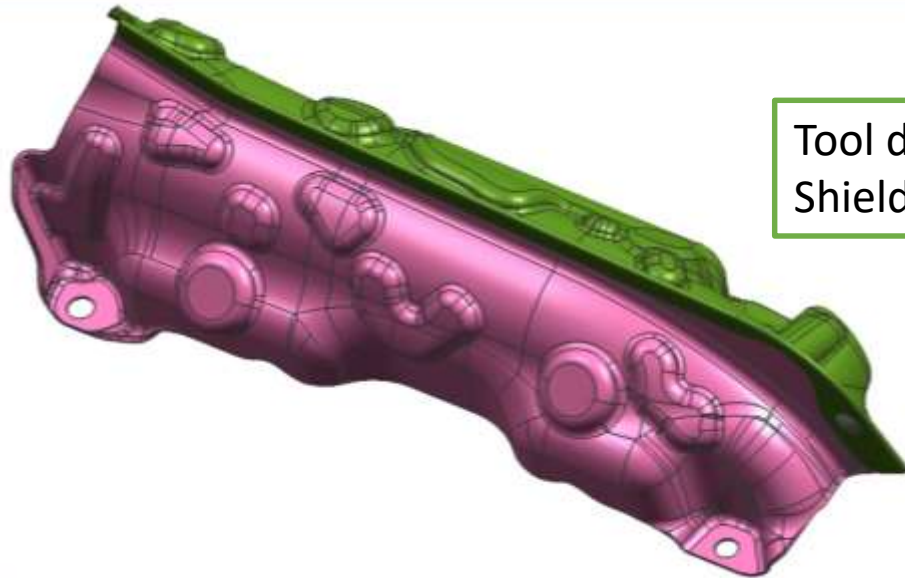
Restrike tool



Hole Piercing tool



Project : Panther Engine Mount Heat Shield
No. of parts : 7



Tool design:-Shield Assembly Ext Heat
Shield Tool Assembly



Description:-

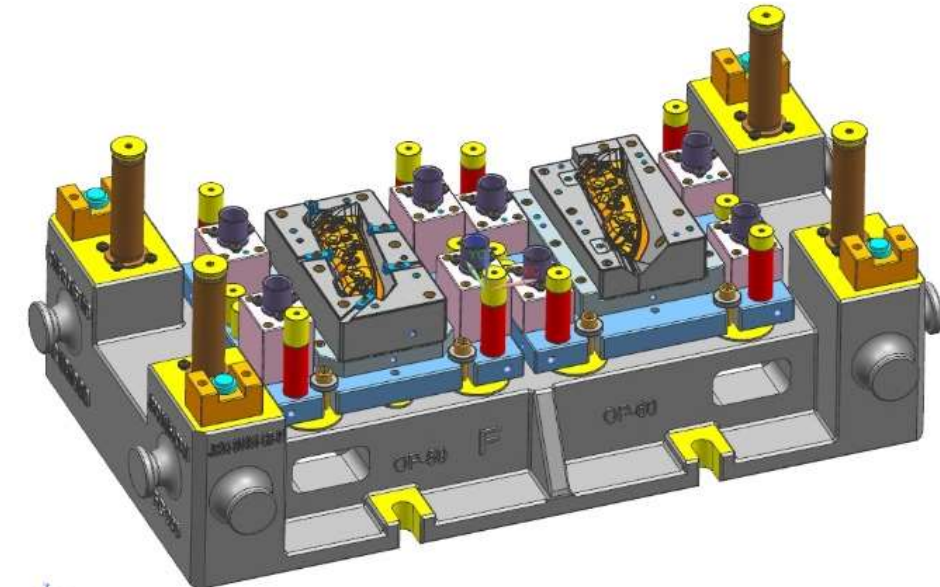
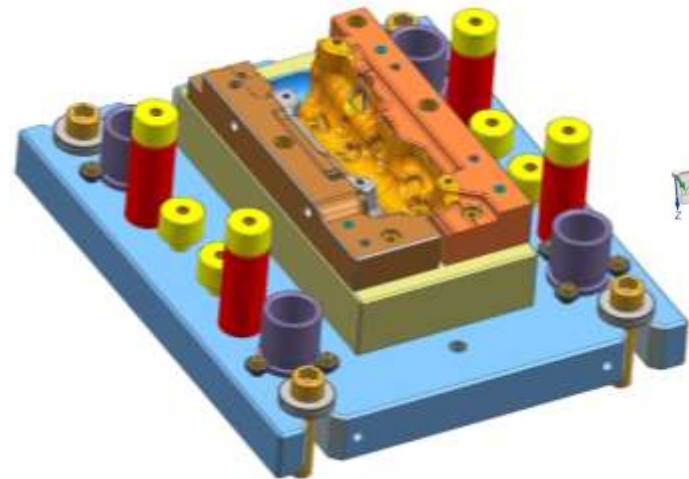
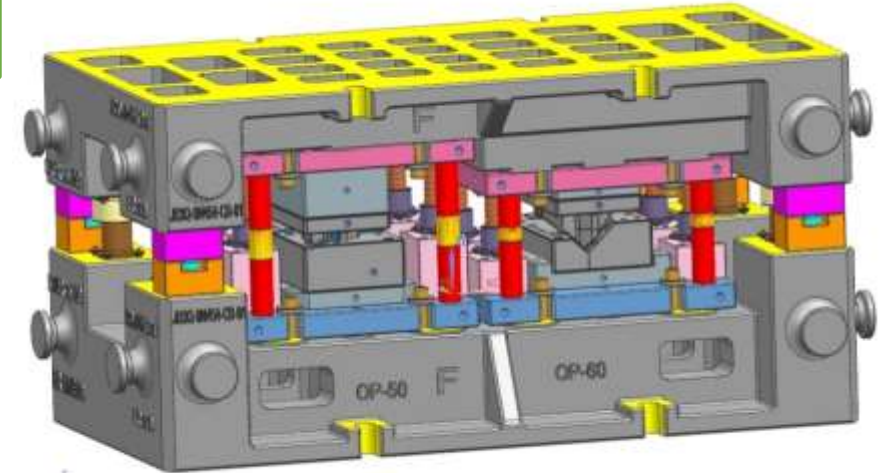
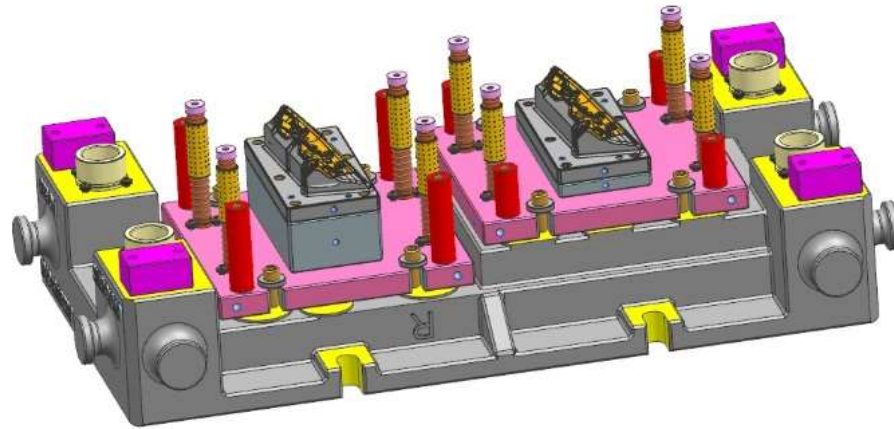
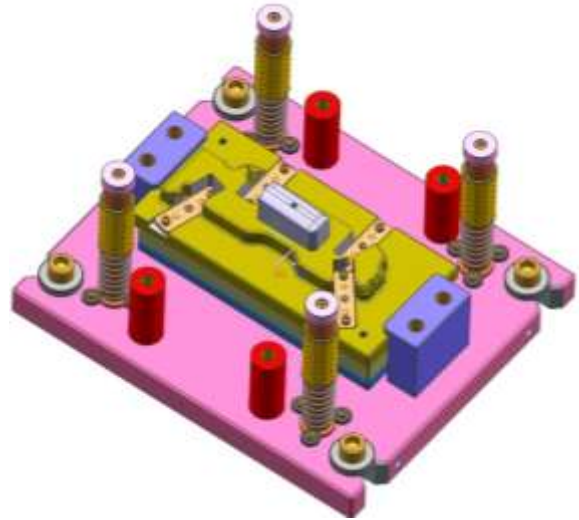
- 1-Outer Skin- Aluminum silicon coted skin 0.4mm thickness.
- 2-Insulation-Elrotherm 300 , 1.0mm thickness.
- 3-Inner Skin-Stainless steel 0.4mm thickness.



MSME TECHNOLOGY CENTER INDO GERMAN TOOL ROOM , AURANGABAD

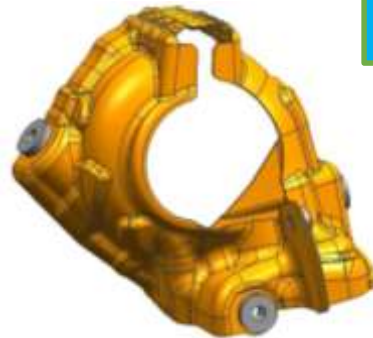
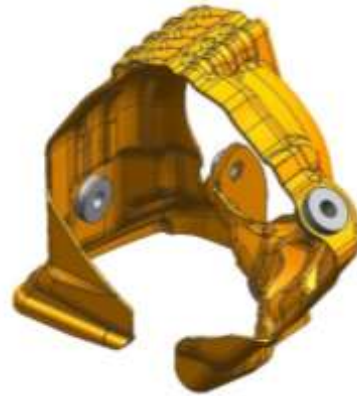
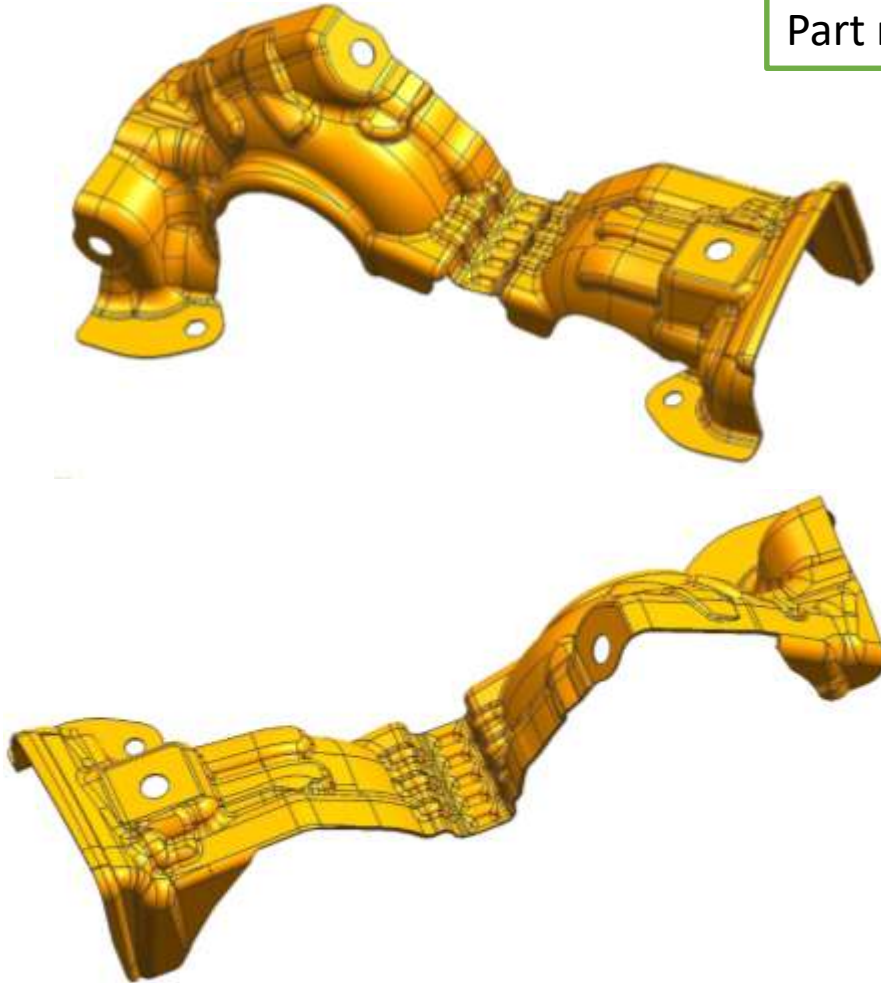


Tool design:-Shield Assembly Ext Heat
Shield Tool Assembly



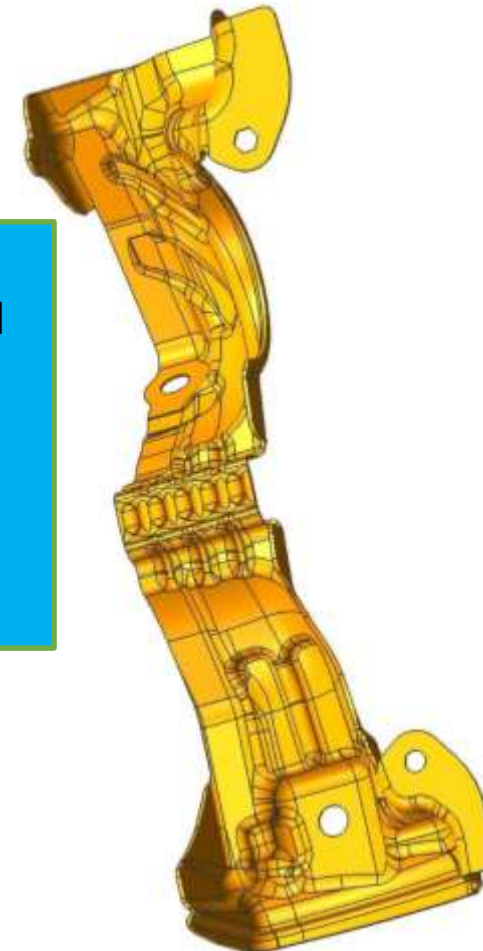


Part name:-Shield Engine Cylinder head Heat Shield

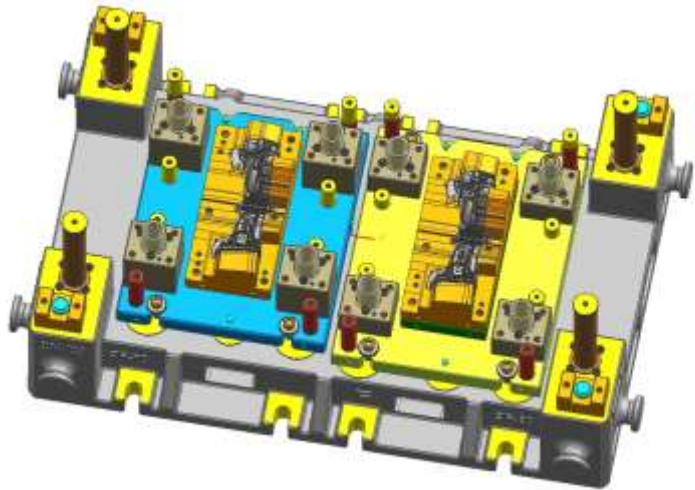


Description:-

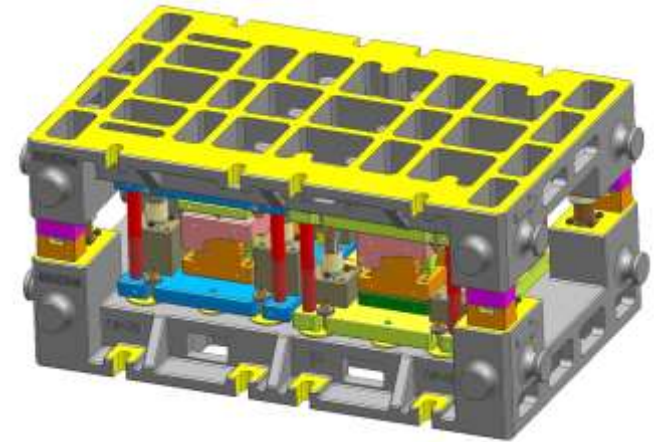
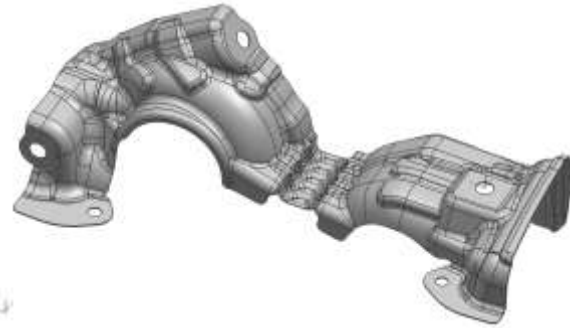
- 1-Outer Skin- Aluminum silicon coted skin 0.4mm thickness.
- 2-Insulation-Elrotherm 300 , 1.0mm thickness.
- 3-Inner Skin-Stainless steel 0.4mm thickness.



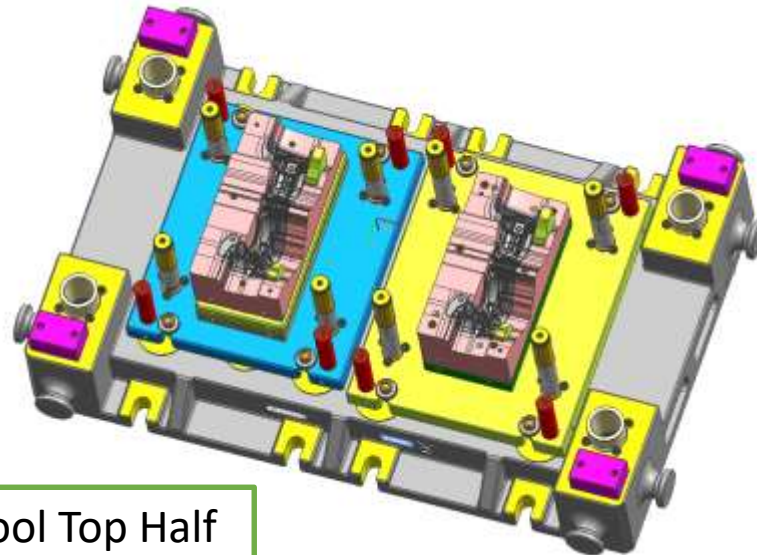
Tool design:-Shield Engine Cylinder head Heat Shield



Tool Bottom Half



Tool Assembly



Tool Top Half



CLUTCH PART TOOLINGS MANUFACTURED

COVER ASSEMBLY

DRIVE PLATE ASSEMBLY





MSME TECHNOLOGY CENTER
INDO GERMAN TOOL ROOM , AURANGABAD



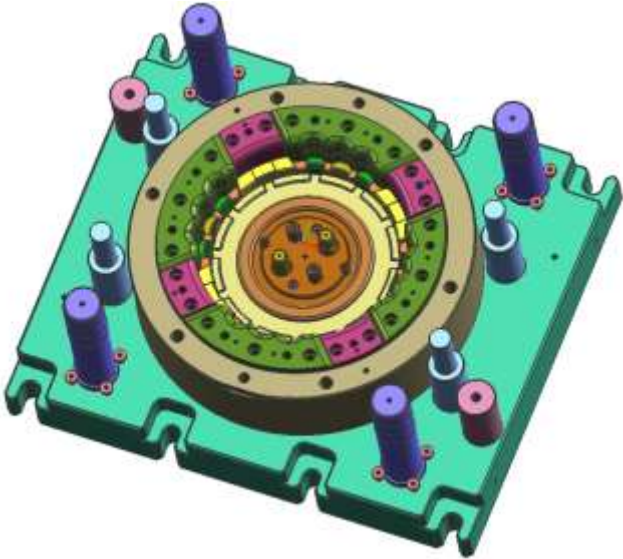
Part Name :-Dia. 395 Cover plate

Sheet thickness-6mm
Dimensions for Inspection-130
Flatness – 0.3mm
Holes Positional Tolerance-0.1mm





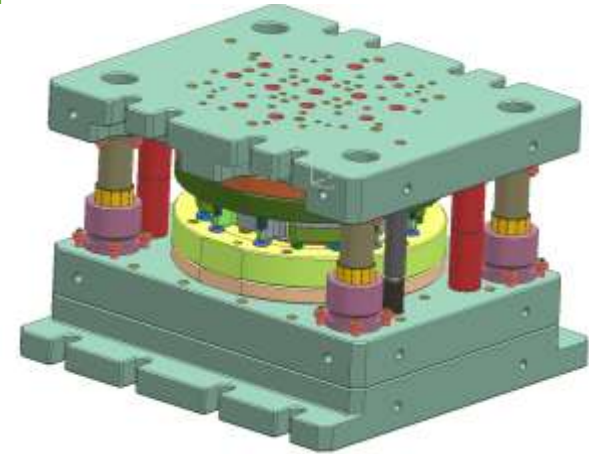
Part Name :-Dia. 395 Cover plate



Draw tool bottom Half



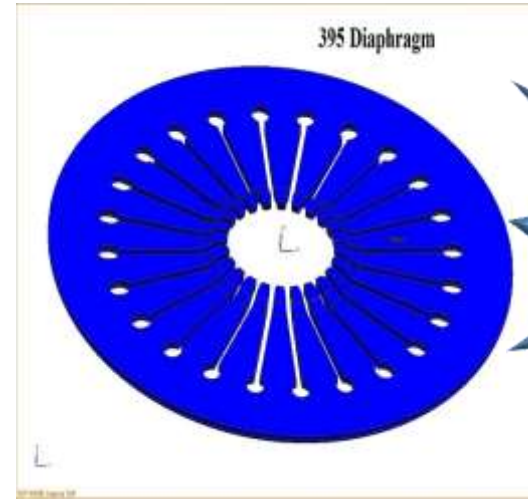
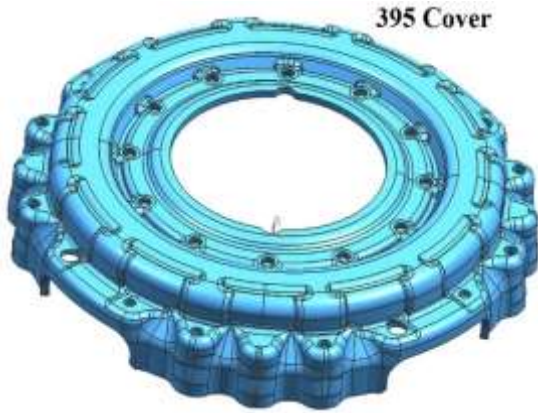
Hole Piercing tool Top Half



Hole Piercing tool Assembly



MSME TECHNOLOGY CENTER INDO GERMAN TOOL ROOM , AURANGABAD



1st time developed in INDIA by IGTR.





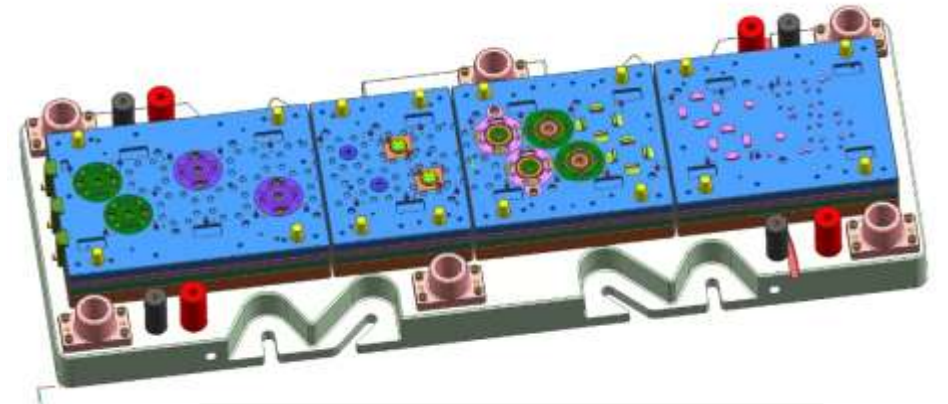
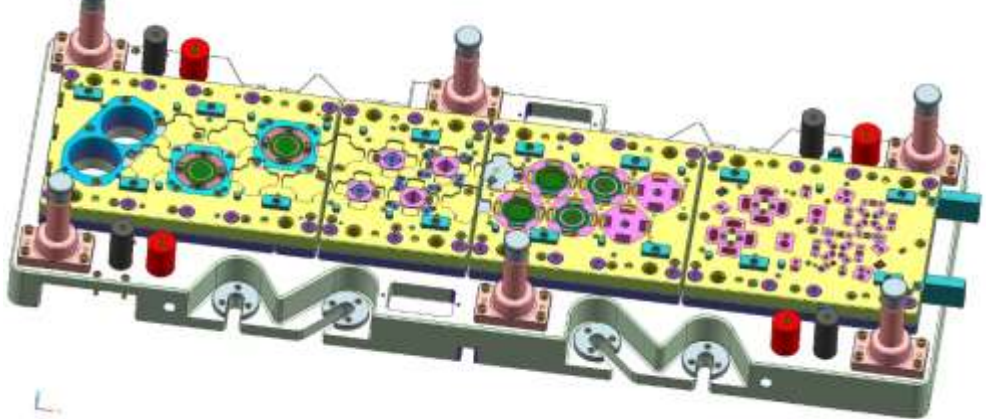
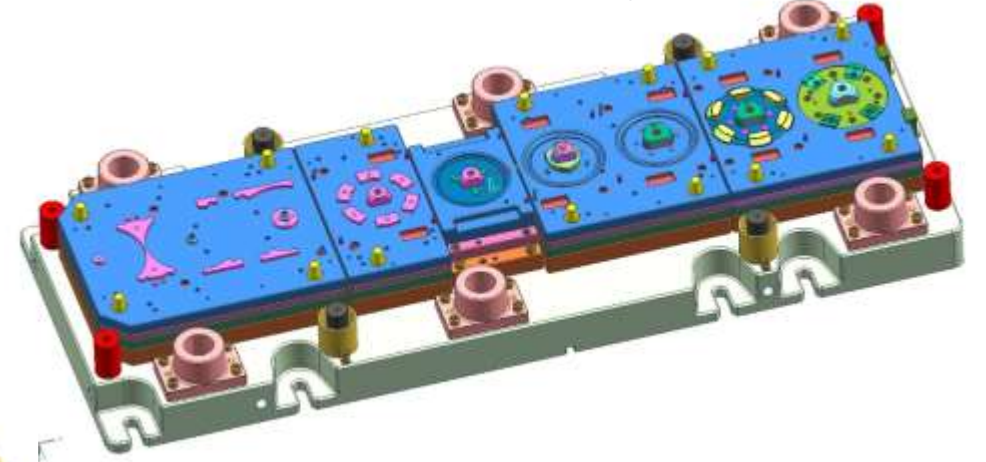
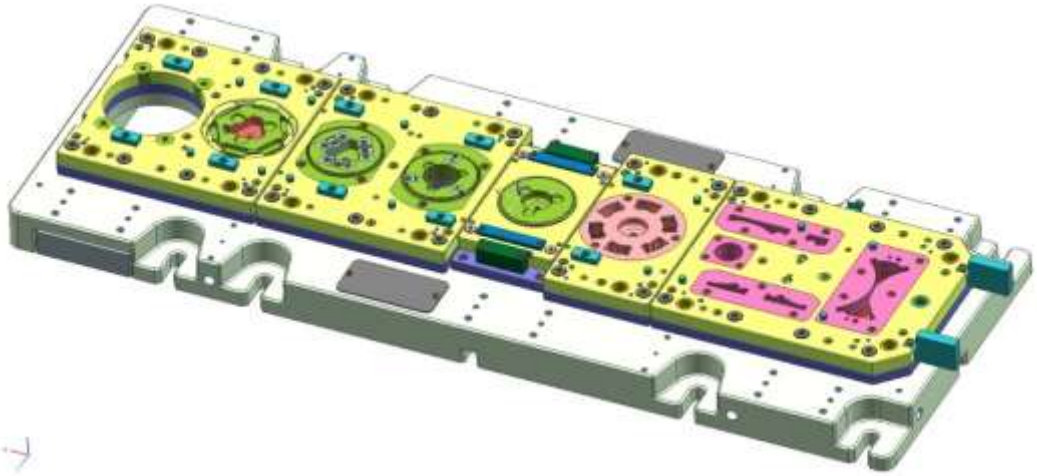
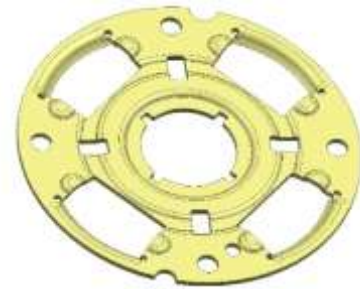
MSME TECHNOLOGY CENTER INDO GERMAN TOOL ROOM , AURANGABAD



1st time
developed
in INDIA by
IGTR.



395 Retainer Plate



Progressive tool Bottom Half

Progressive tool Top Half



Parts Developed for Jeep Compass (launch 12th April, 2017)

No. of parts developed : 62 nos.

No. of tools developed : 217 nos.

Execution Time : 6 months

Segments :

- BIW
- Engine
- Chassis



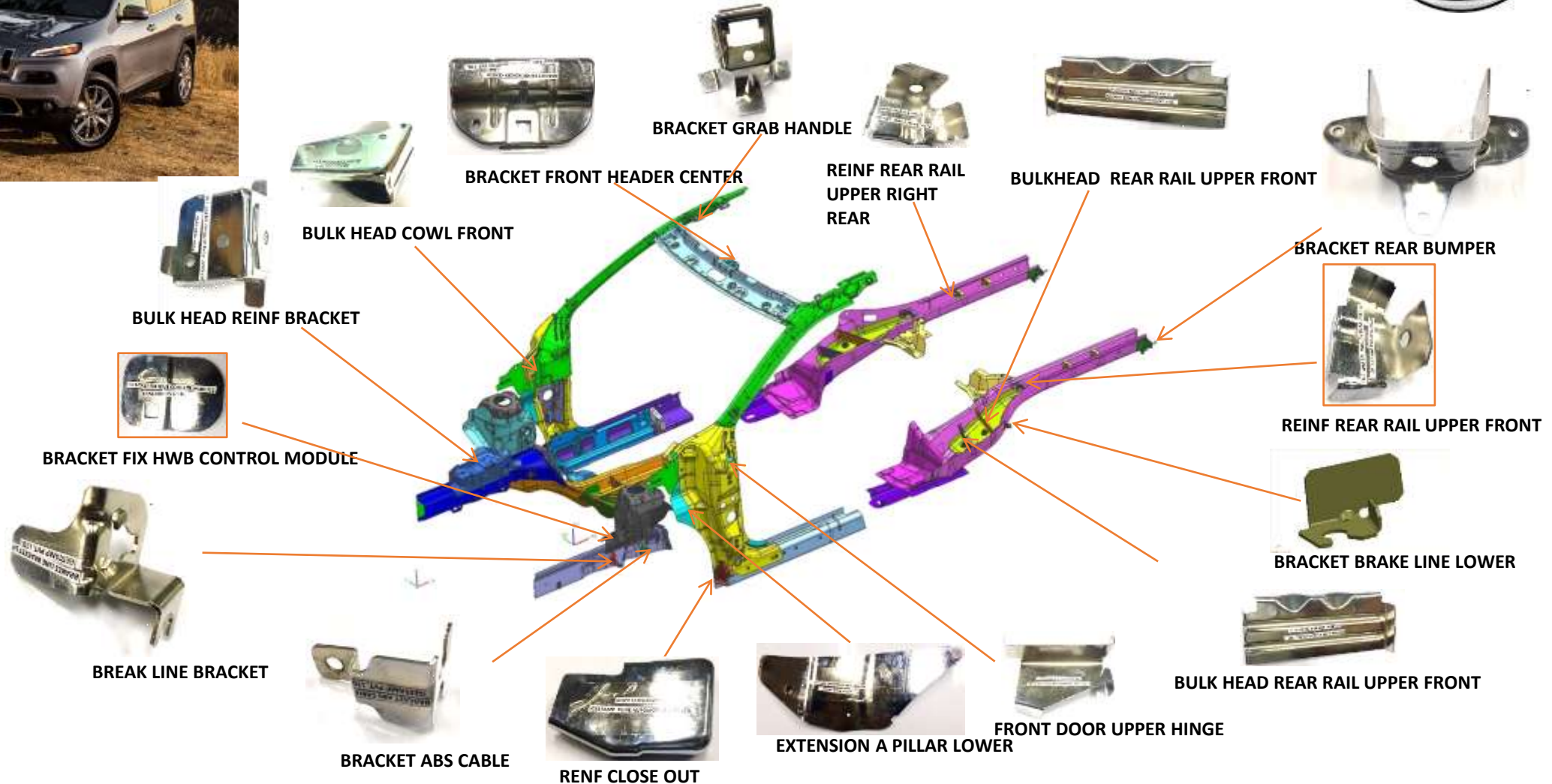
Jeep®



MSME TECHNOLOGY CENTER INDO GERMAN TOOL ROOM , AURANGABAD



Parts Developed for Jeep Compass (launch 12th April, 2017)





Jeep.

Parts Developed for Fiat & Chrysler Jeep Compass

NO. OF PARTS : 7

DEVELOPMENT TIME : 5 WEEKS

EXPORT TO FIAT

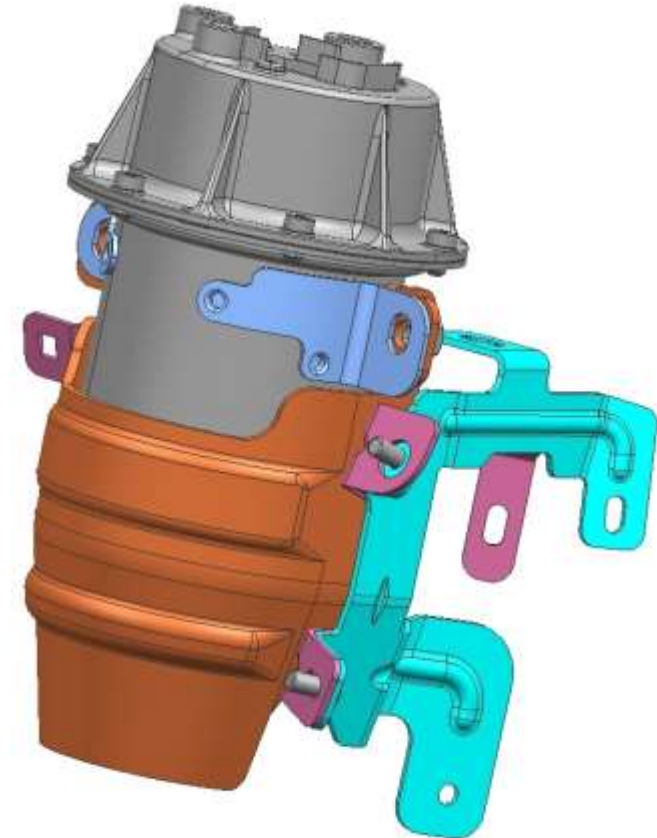
- ✓ BRAZIL
- ✓ MAXICO
- ✓ USA

CRITICALITY

- ❖ SHEET THICKNESS : 3 MM
- ❖ TENSILE STRENGTH : 1000 MPA
- ❖ SIMULATION CHANGES APPRECIATED BY FCA



DIESEL FUEL FILTER BRACKET





MSME TECHNOLOGY CENTER INDO GERMAN TOOL ROOM , AURANGABAD



Jeep

Parts Developed for Fiat & Chrysler Jeep Compass

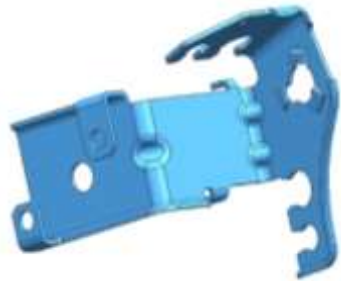
1st time developed in INDIA by IGTR.



FULE TANK STRAP



PANEL TAIL LAMP



ABS-SENSOR CABLE



LIFT GATE LATCH

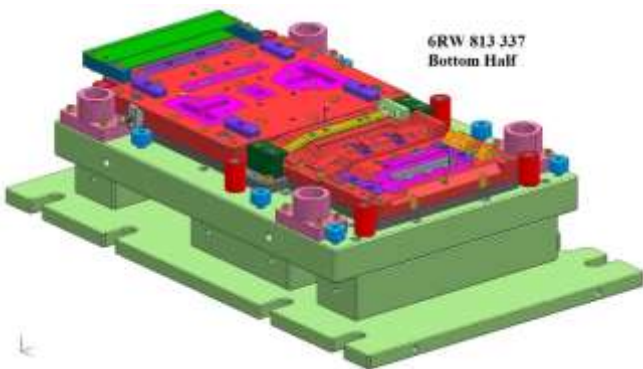
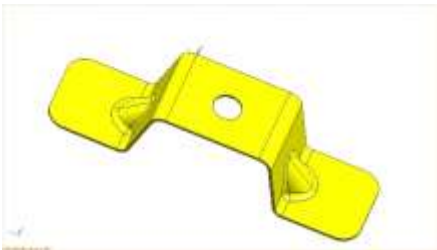
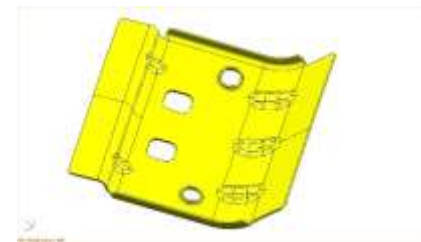
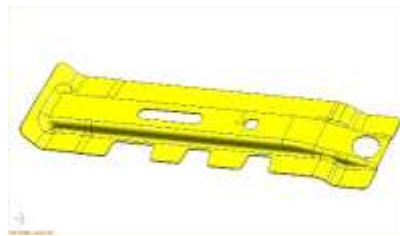




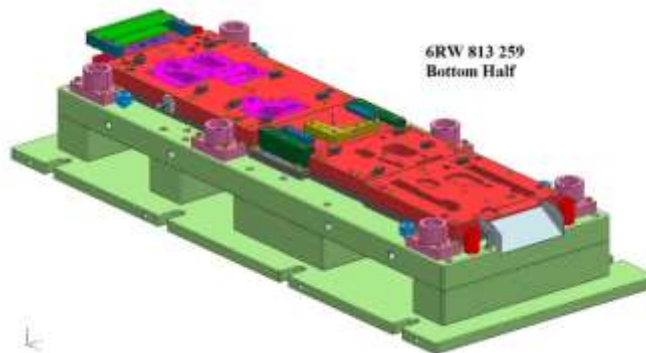
MSME TECHNOLOGY CENTER INDO GERMAN TOOL ROOM , AURANGABAD



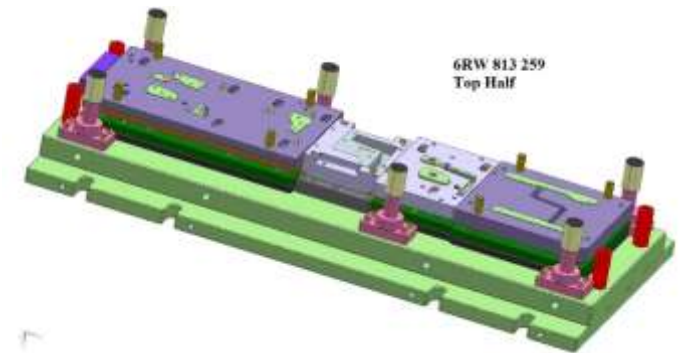
Parts Developed for Volkswagen



6RW 813 337
Bottom Half



6RW 813 259
Bottom Half



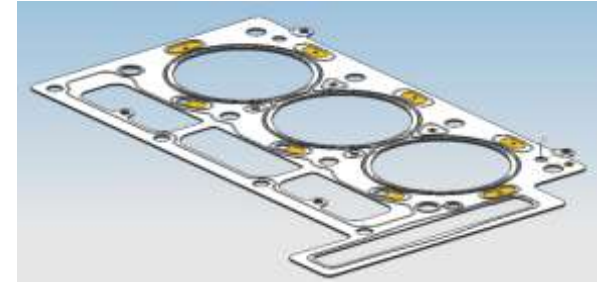
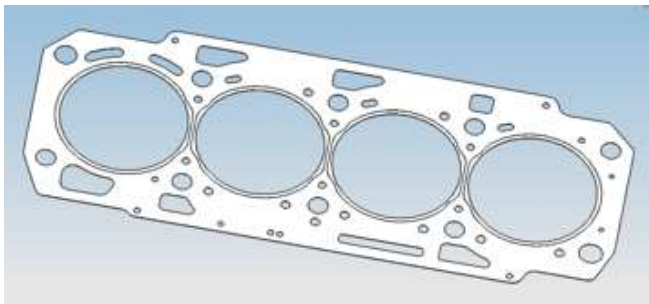
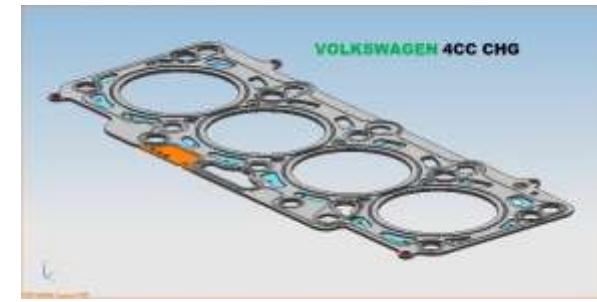
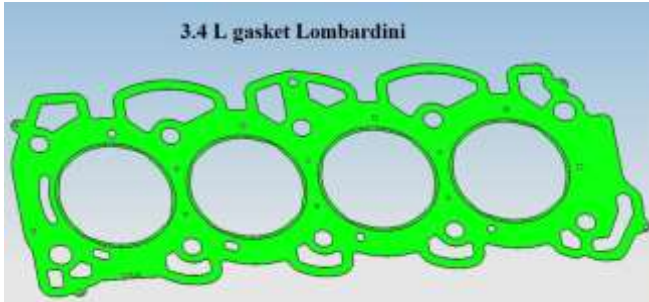
6RW 813 259
Top Half



MSME TECHNOLOGY CENTER INDO GERMAN TOOL ROOM , AURANGABAD



Gasket Tooling Developed





MSME TECHNOLOGY CENTER INDO GERMAN TOOL ROOM , AURANGABAD



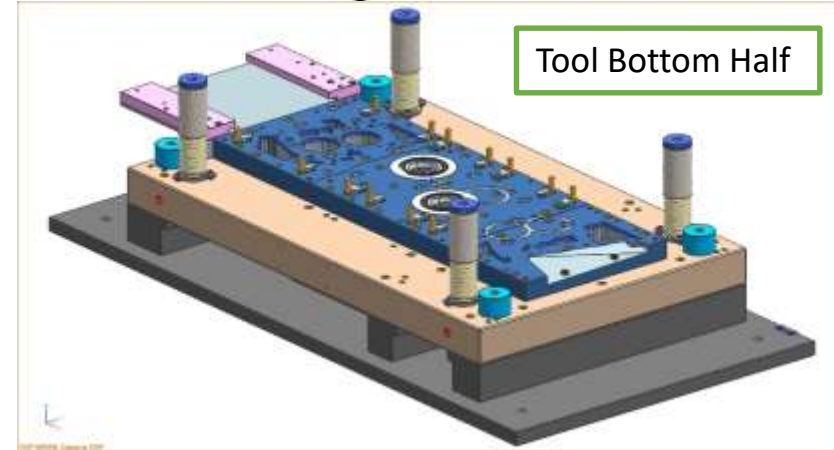
Gasket Tooling Developed



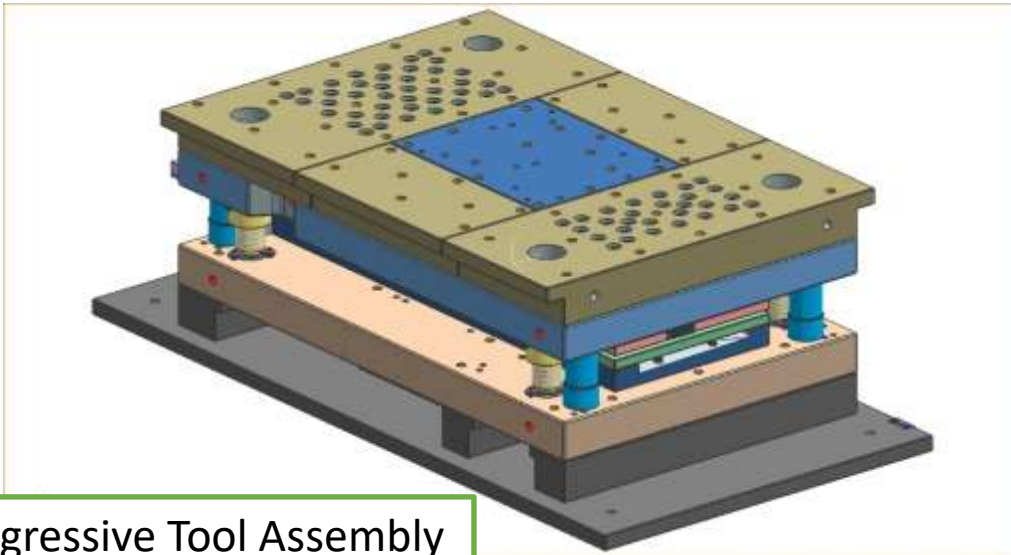
Description:-
Sheet thickness from
0.07 to 1.2mm



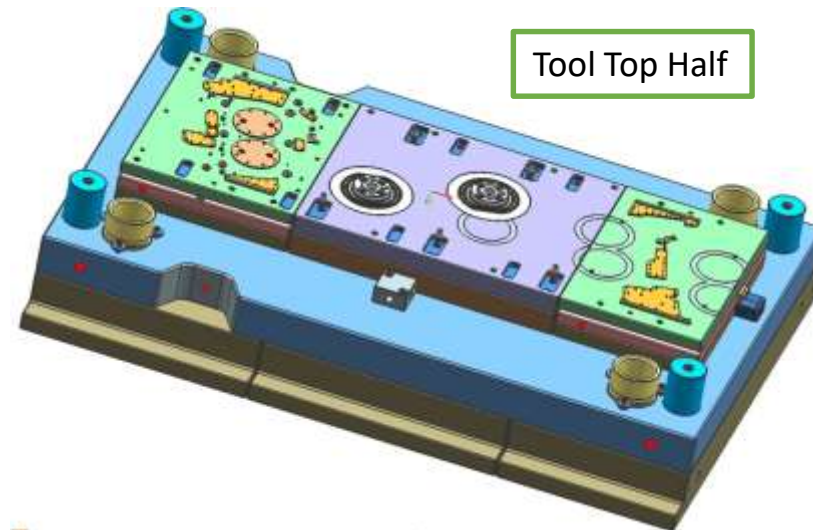
Strip Layout



Tool Bottom Half



Progressive Tool Assembly



Tool Top Half



MSME TECHNOLOGY CENTER
INDO GERMAN TOOL ROOM , AURANGABAD



DIE CASTING



MSME TECHNOLOGY CENTER INDO GERMAN TOOL ROOM , AURANGABAD

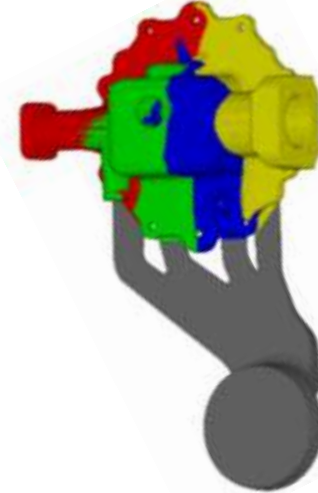
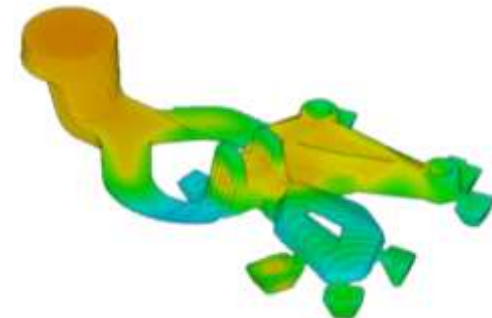
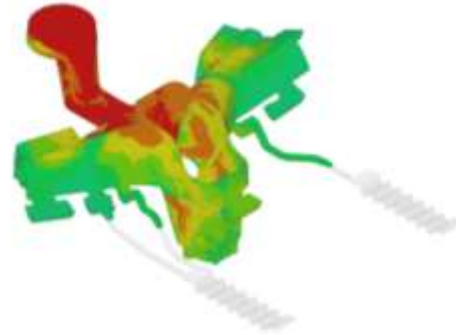
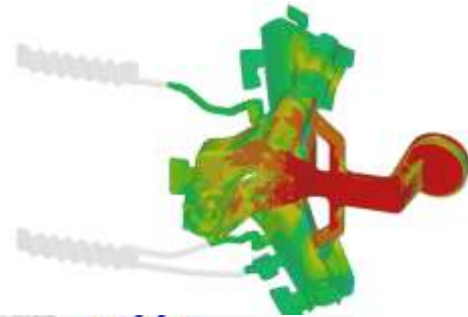
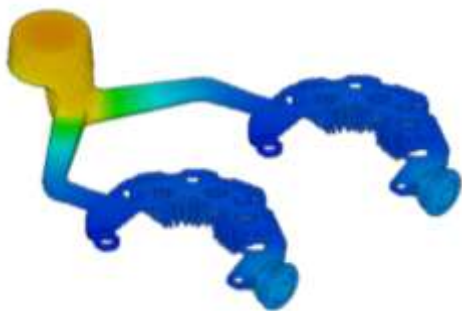


CUSTOMERS



Die Design Through Simulation

- Fluid flow
- Air Entrapment
- Flow Temperature
- Flow Velocity
- Gate Contribution
- Solidification





MSME TECHNOLOGY CENTER INDO GERMAN TOOL ROOM , AURANGABAD



Volkswagen

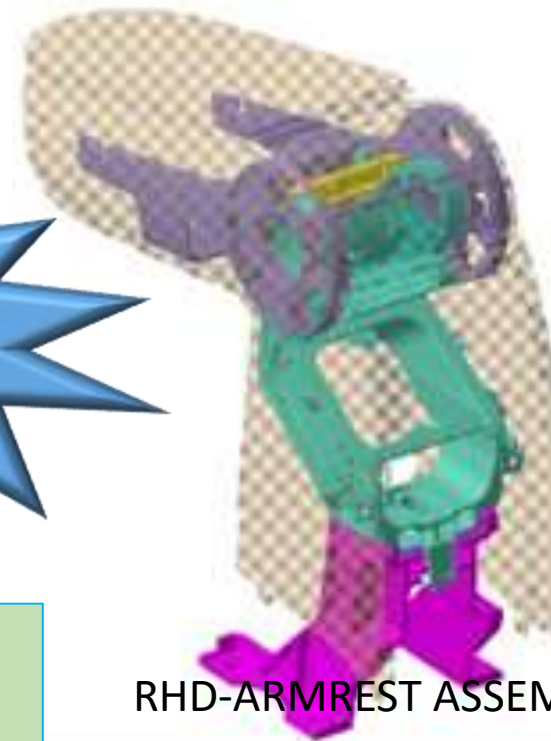
This is a assembly of four parts and all parts developed and respective die design in IGTR.



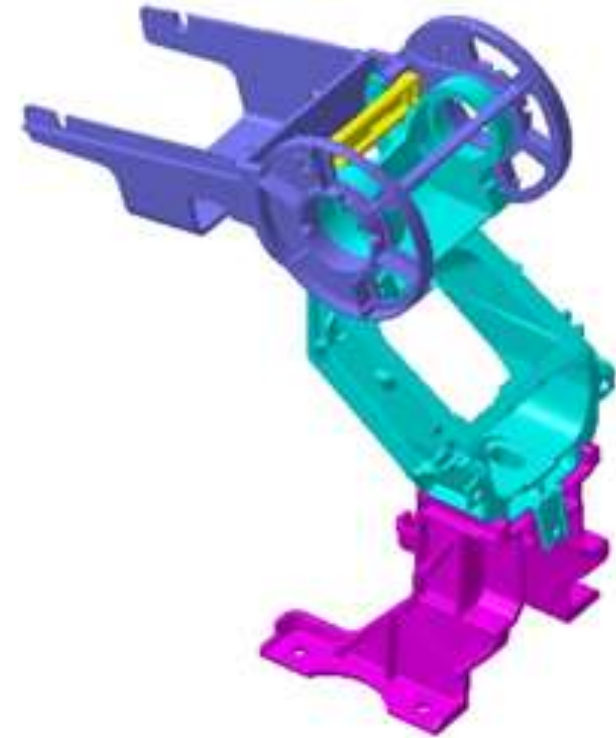
LHD-ARMREST ASSEMBLY

1st time developed in INDIA by IGTR.

All component are Reverse Developed to get actual geometry.



RHD-ARMREST ASSEMBLY





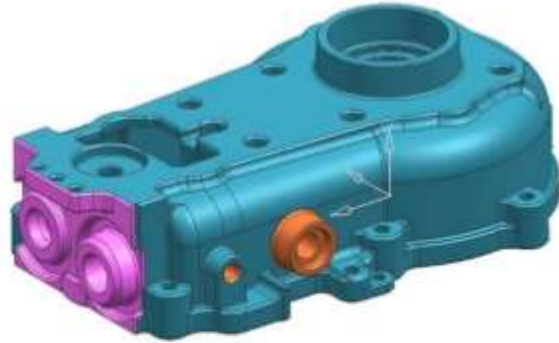
MSME TECHNOLOGY CENTER INDO GERMAN TOOL ROOM , AURANGABAD



BOSCH



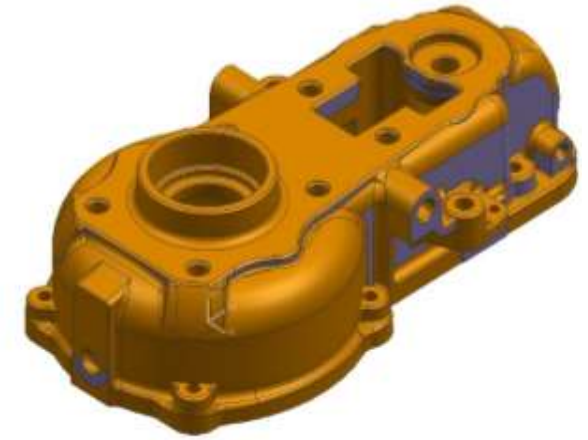
PUMP HOUSING-BOSCH



GOV-Hsg-333



GOV-Hsg-723



GOV-Hsg-523



Die suited on 250T zetai,300T toyota
Having all side core in finger cam.

110 Dimensions maintained in 10
microns.



Die suited on 420T.
Having 3 Side core.
Developed by Reverse engineering.

Total 350 Dimension.
78 Dimension are unilateral in 10
microns limit.



Die suited on 420T.
Having 3 Side core.
Developed by Reverse engineering.

Total 480 Dimension.
132 Dimension are unilateral in 10
microns limit.

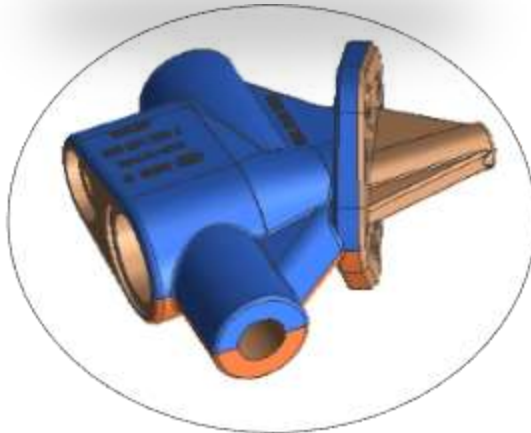
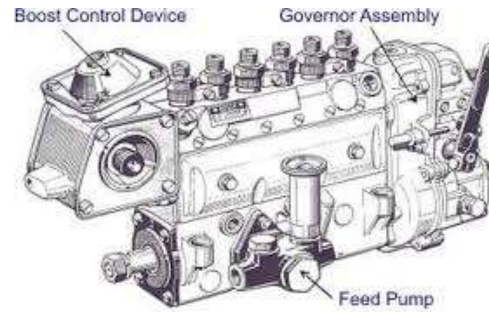


Die suited on 420T.
Having 3 Side core.
Developed by Reverse engineering.

Total 375 Dimension.
78 Dimension are unilateral in 10
microns limit.



FEED PUMP HOUSING
(ACTUAL COMPONENT)



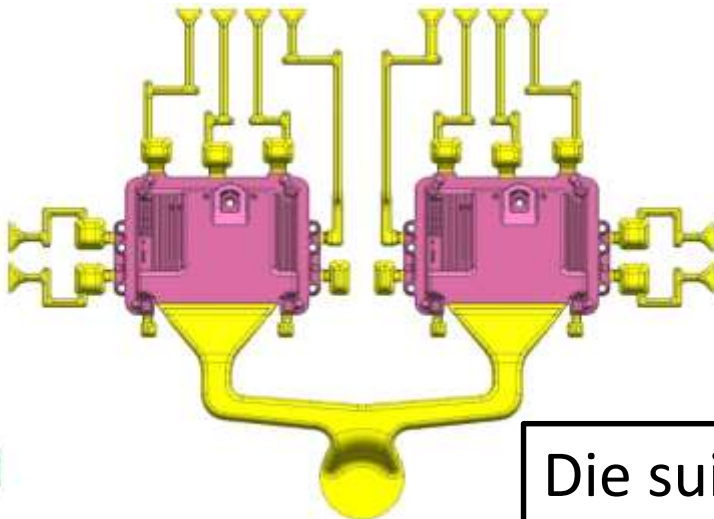
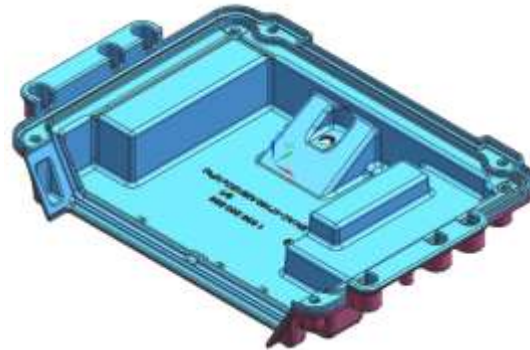
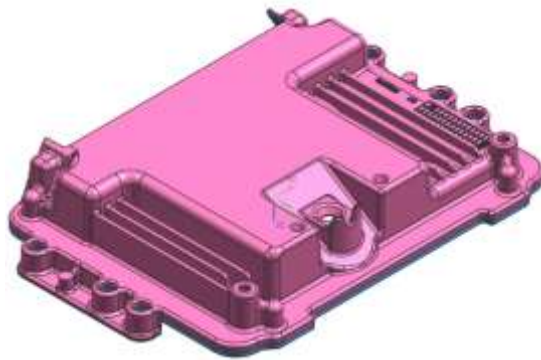
FEED PUMP HOUSING



MSME TECHNOLOGY CENTER INDO GERMAN TOOL ROOM , AURANGABAD



BOSCH



Total 368 Dimension.
168 Dimension are unilateral in
10 microns limit.
Use of Silicon Powder Technology

ECU Cover EPA-1612

Die suited on 830T.



ECU Cover EPA-1616



BOSCH

ECU Cover EPA-1612



Total 368 Dimension.
168 Dimension are unilateral in
10 microns limit.
Use of Silicon Powder Technology



Die suited on 420T.

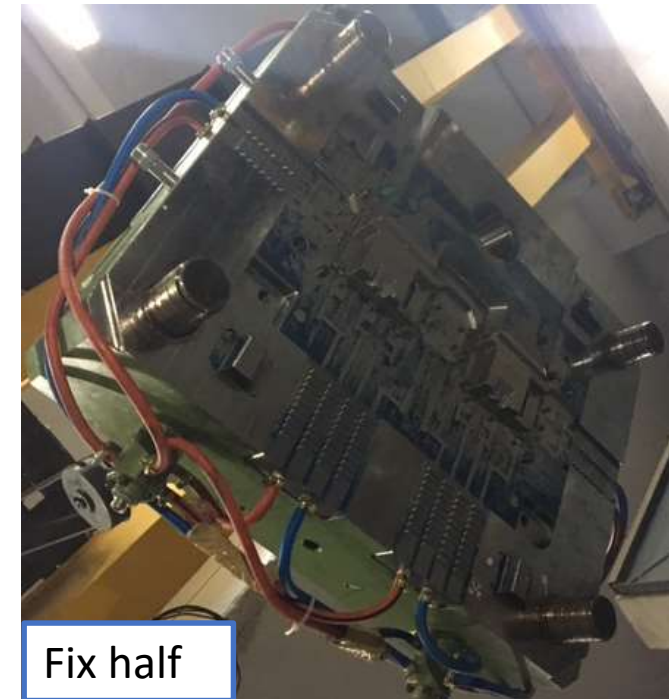




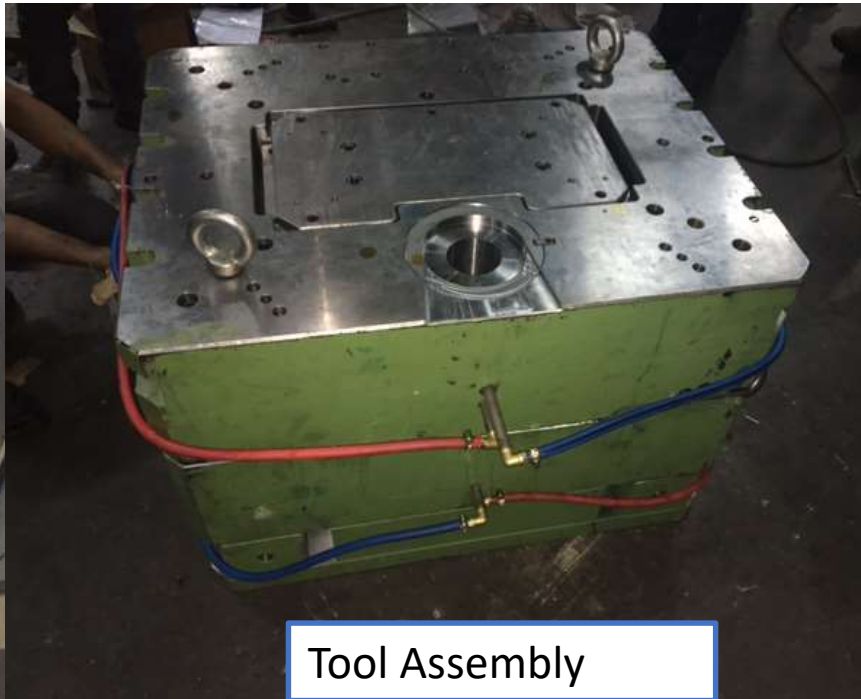
MSME TECHNOLOGY CENTER
INDO GERMAN TOOL ROOM , AURANGABAD



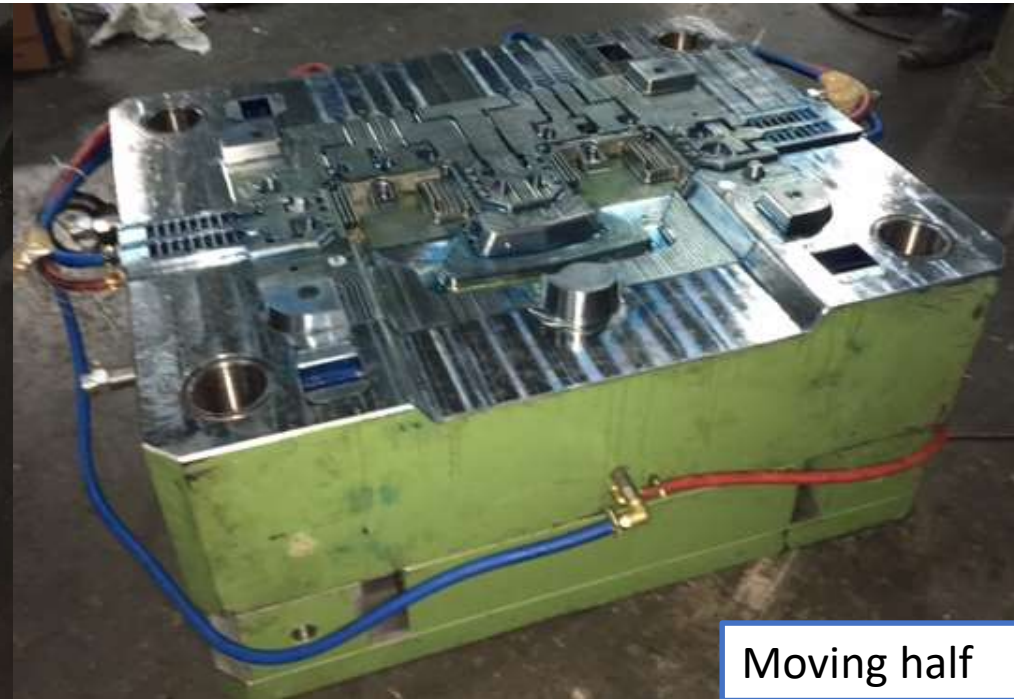
EPA 1612 Cover ECU



Fix half



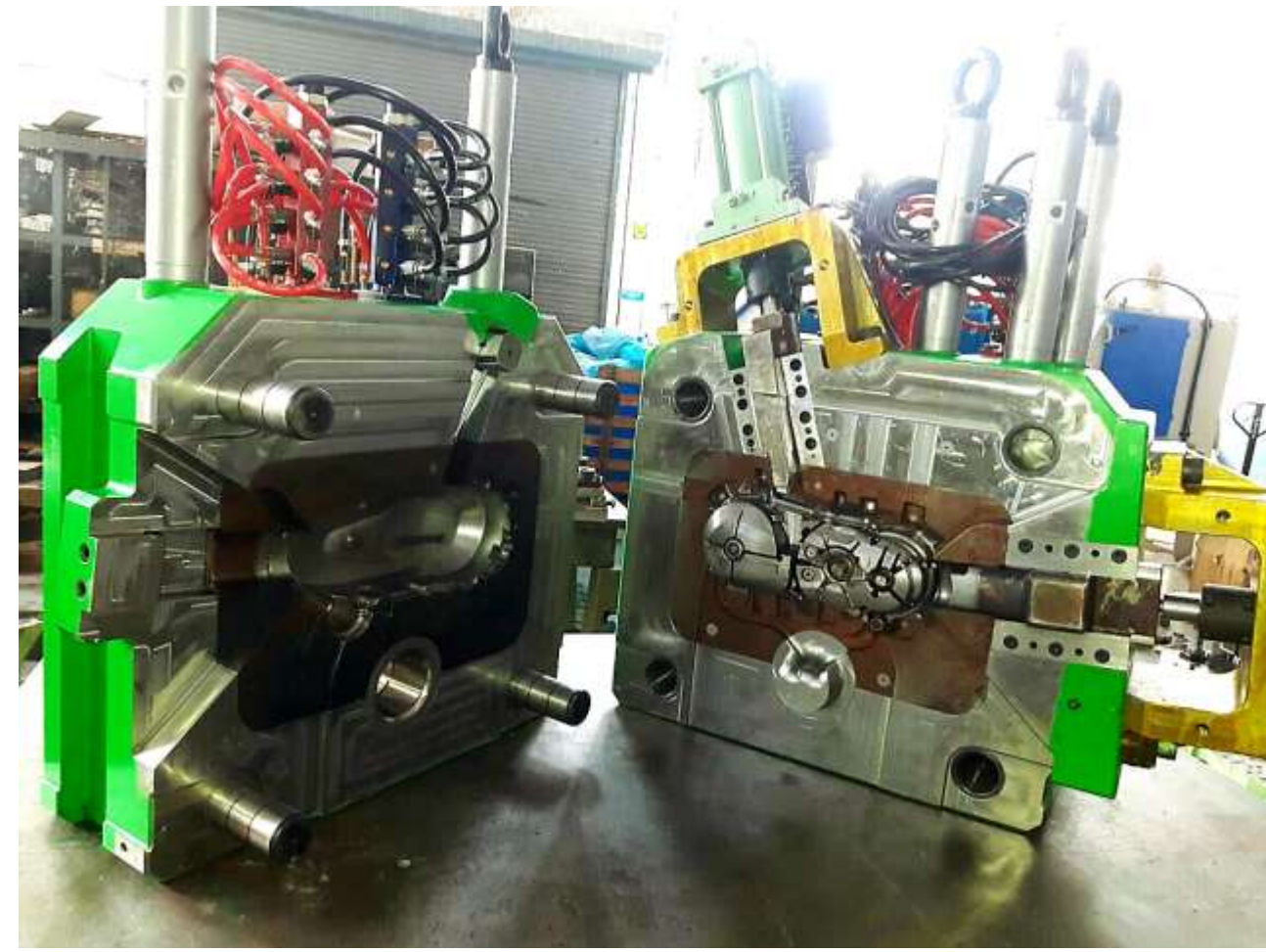
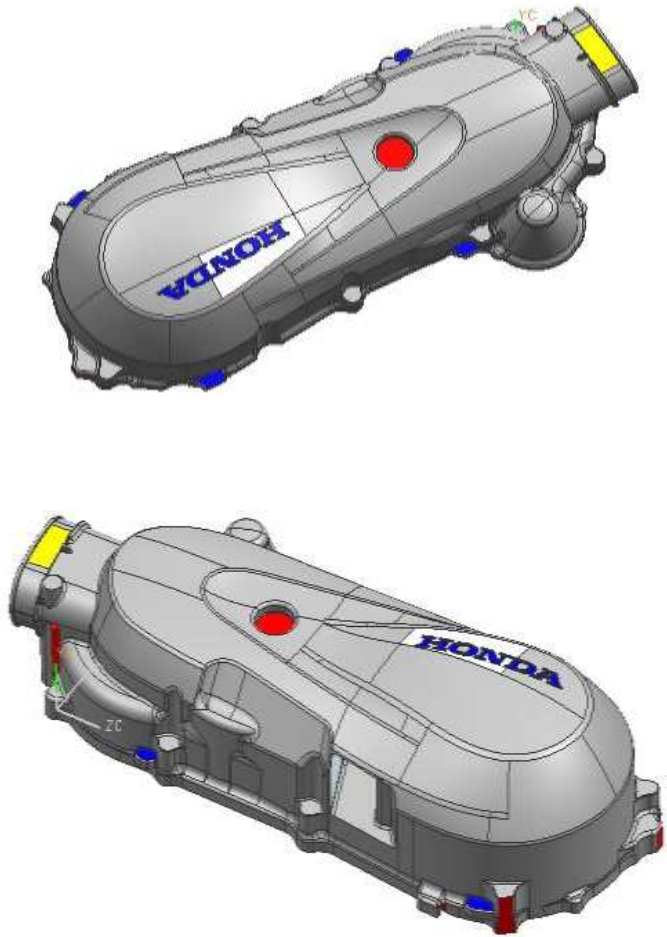
Tool Assembly



Moving half



MSME TECHNOLOGY CENTER INDO GERMAN TOOL ROOM , AURANGABAD

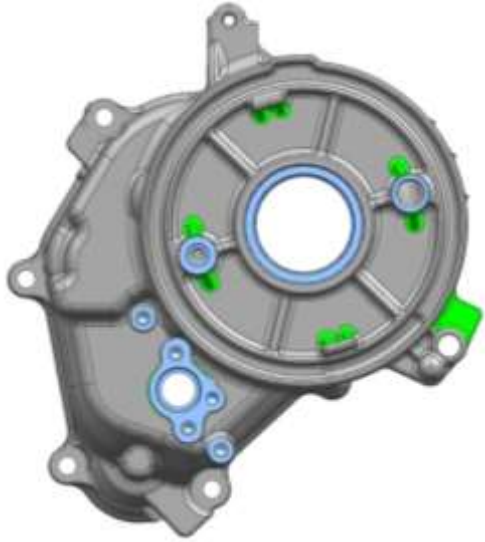


Project : LSC cover

Die suited on 650T.



MSME TECHNOLOGY CENTER
INDO GERMAN TOOL ROOM , AURANGABAD



H-101 Transmission cover

Die suited on 660T.



MSME TECHNOLOGY CENTER INDO GERMAN TOOL ROOM , AURANGABAD



Grab Handle



Magneto cover
(Engine cover LH)



Cylinder Block



Engine Stay



Pillion Holder



Holder Rider



Foot Rest Pillion



Foot Rest Rider



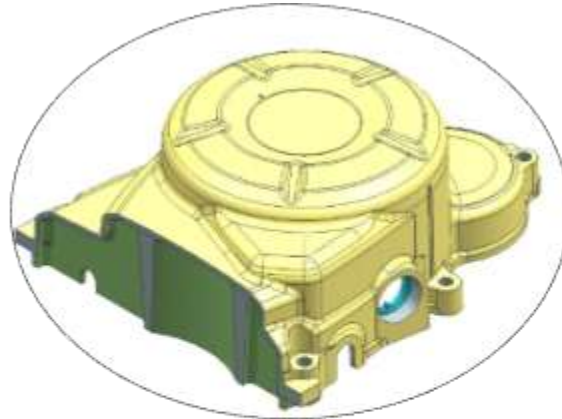
Clutch Cover (Engine cover
RH)



K1 Clutch Cover



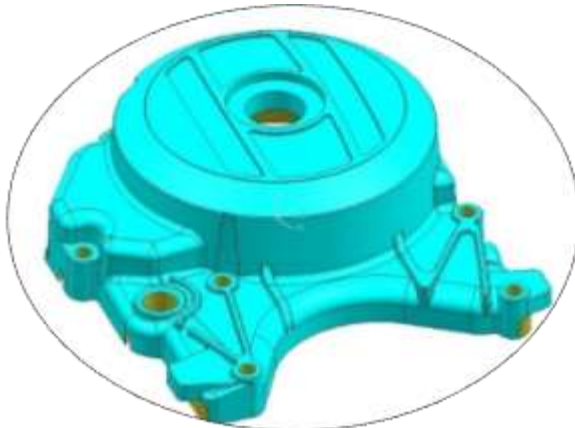
Magneto Cover



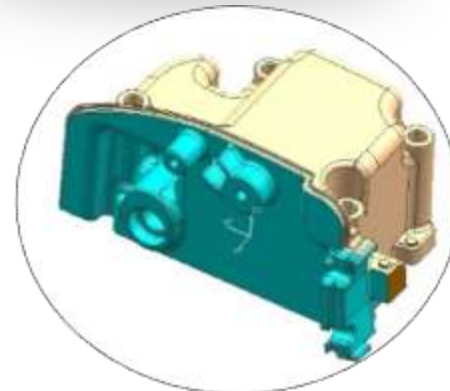
Front Fork



Generator Cover



Gear Shifter



Crank Case

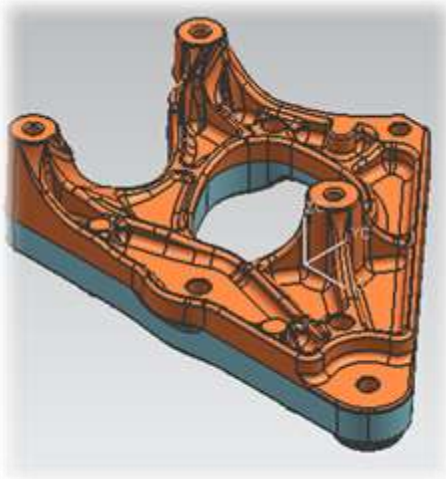




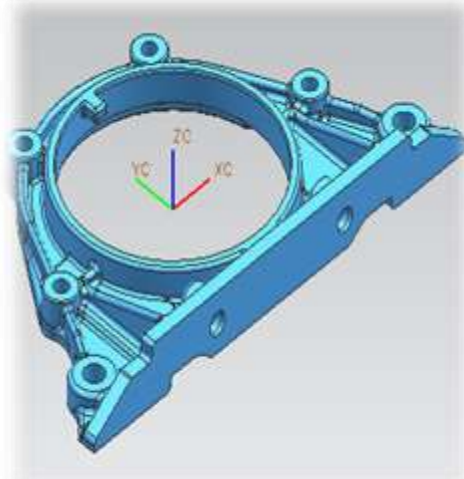
MSME TECHNOLOGY CENTER INDO GERMAN TOOL ROOM , AURANGABAD



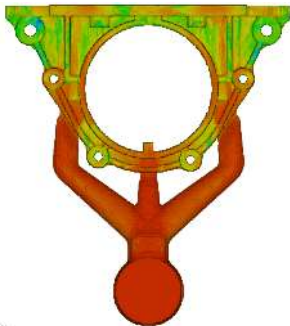
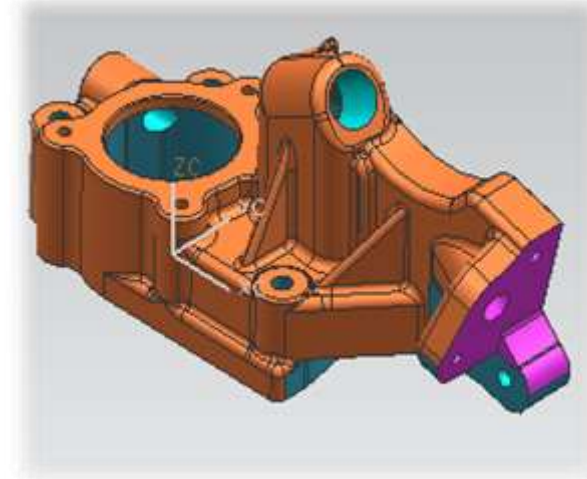
AC Compressor



Oil Seal



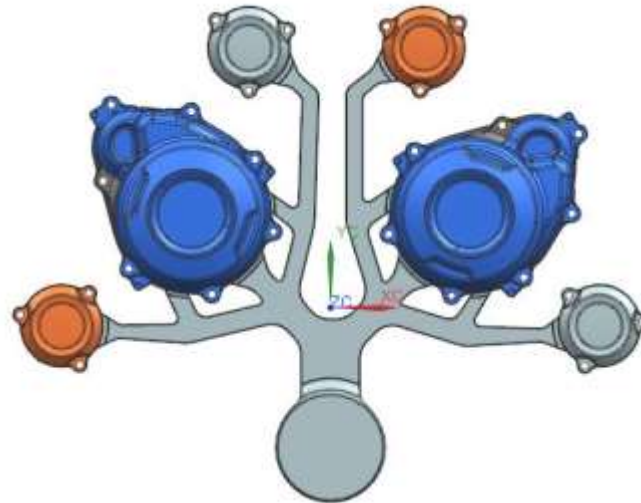
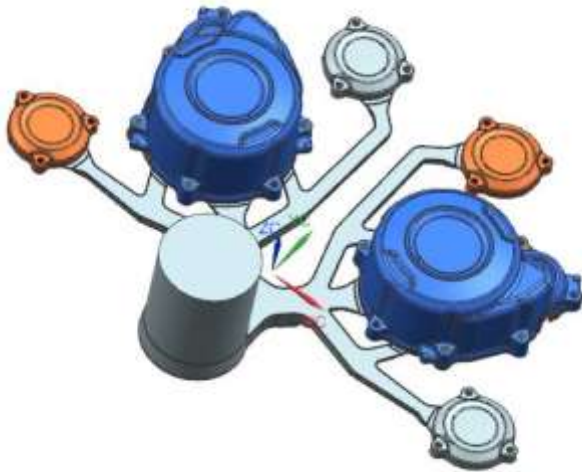
Adaptor Water Outlet



Six cavity family
tool



Die suited on 660T.

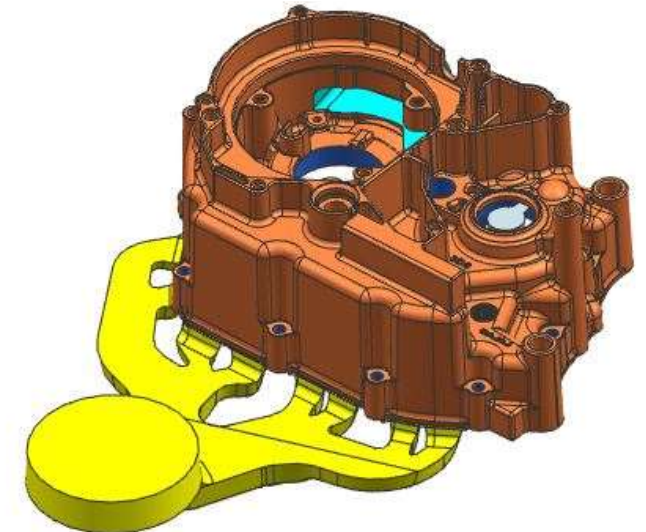
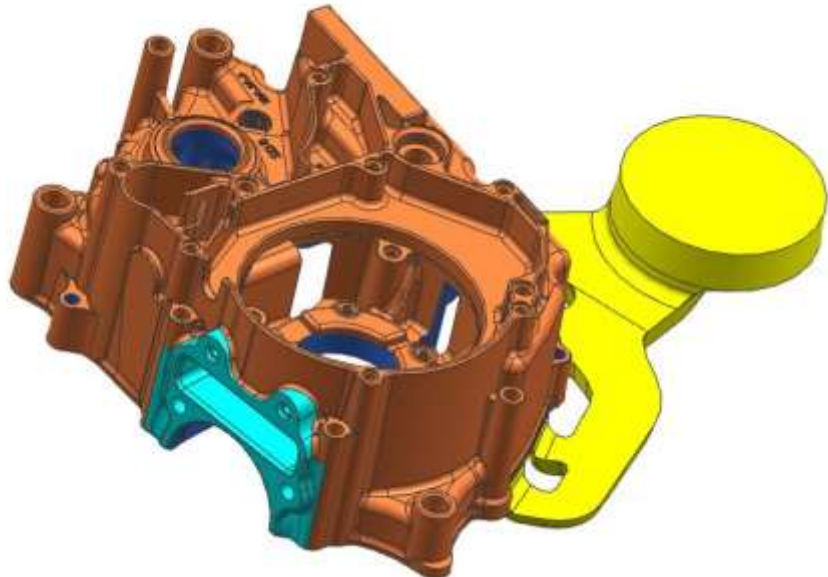
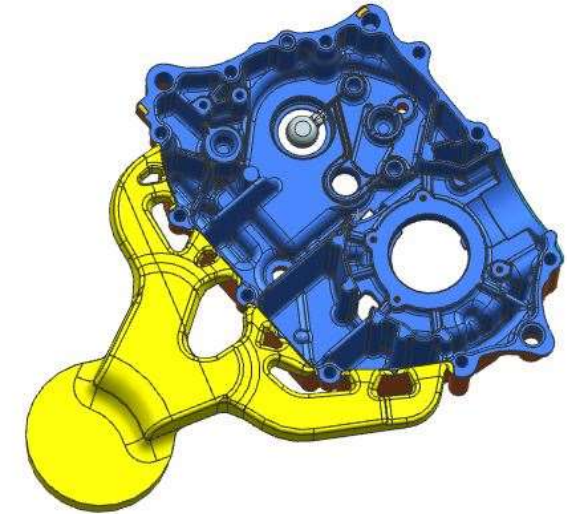
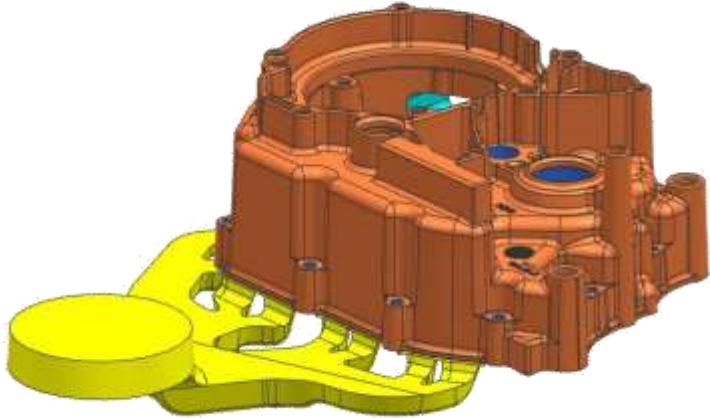


Magneto Cover-2 Cavity + Cap Oil
Filter -2cavity+ Cap filter-2cavity



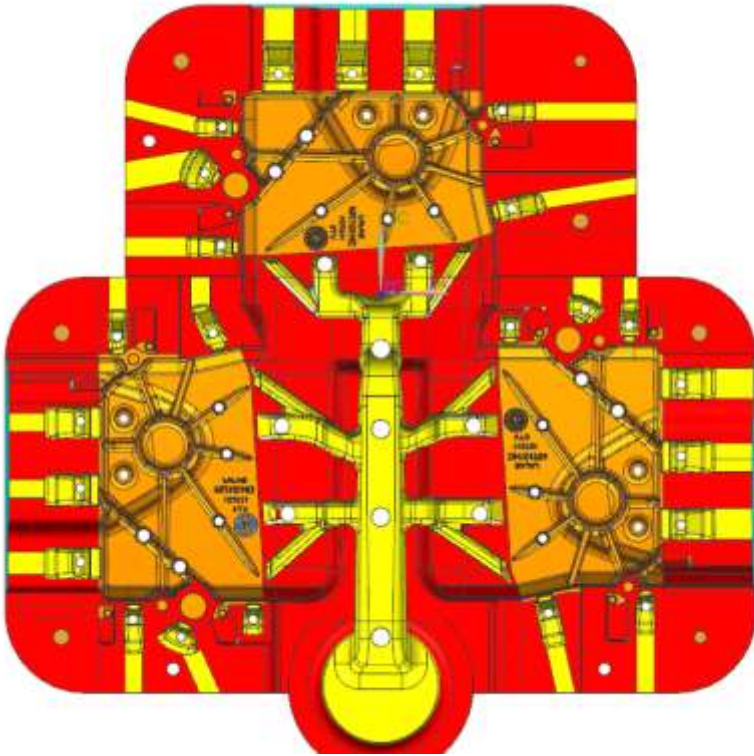
Crank case –LH/RH

Die suited on 700T.

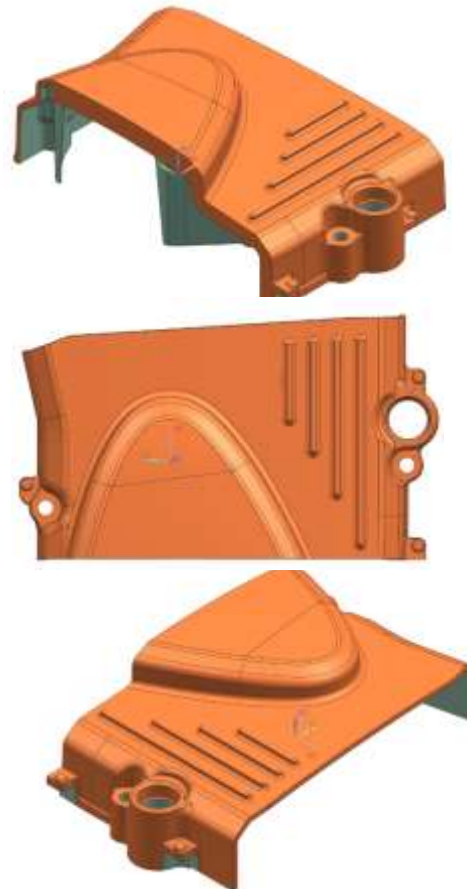




Three cavity tool



RR-Cover LH



Die suited on 500T.



RR-Cover Actual
component



MSME TECHNOLOGY CENTER INDO GERMAN TOOL ROOM , AURANGABAD



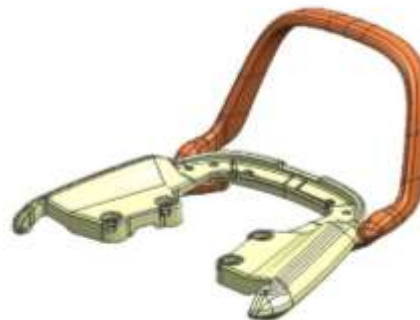
Bajaj Discover -125



Bajaj Platina Upgrade



Bajaj V15

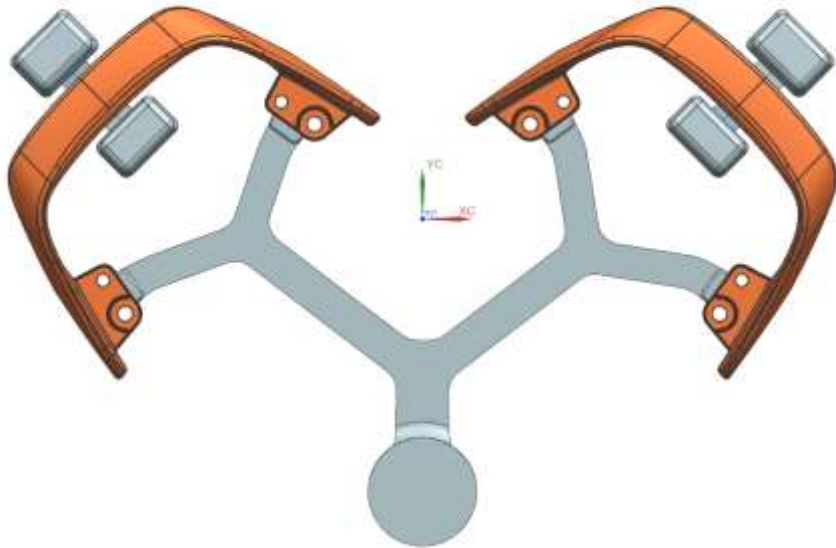




MSME TECHNOLOGY CENTER INDO GERMAN TOOL ROOM , AURANGABAD



Bajaj CT100



Single as well as
Two cavity tool

Grab handle

Die suited on 420T.



MSME TECHNOLOGY CENTER
INDO GERMAN TOOL ROOM , AURANGABAD

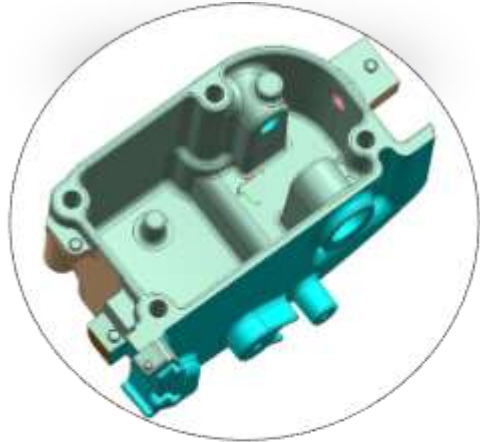
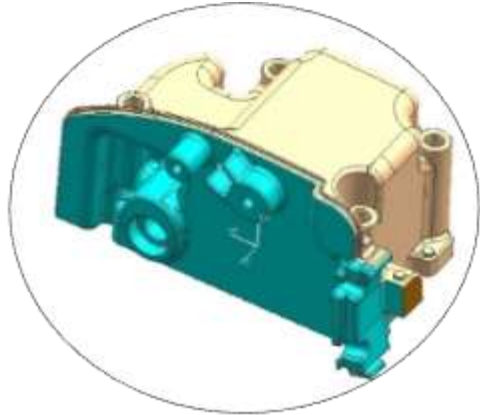


Mahindra Grip





MSME TECHNOLOGY CENTER INDO GERMAN TOOL ROOM , AURANGABAD



BAJAJ RE

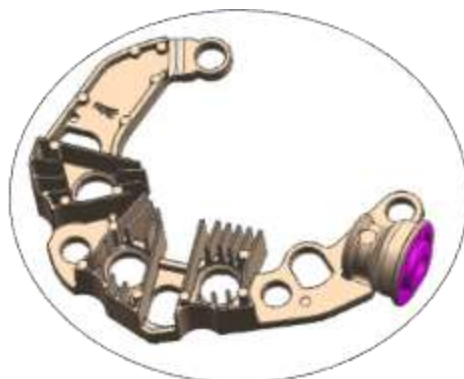




MSME TECHNOLOGY CENTER INDO GERMAN TOOL ROOM , AURANGABAD



HEAT SINK
(ACTUAL COMPONENT)



HEAT SINK



MARUTI ALTO





MSME TECHNOLOGY CENTER INDO GERMAN TOOL ROOM , AURANGABAD



Front bracket having critical spotting faces in between component.
Die made for 250T



Heat sink Component having Critical flatness requirement , for which we have done Silicon powder polishing in EDM.
2 Cavity die on 250 T



Rear bracket having critical spotting faces in between component.
Die made for 250T

Gravity Die Casting Products

Bike Front Fork

Bajaj XCD



Royal Enfield
Classic-350cc



Royal Enfield
Electra-350cc





MSME TECHNOLOGY CENTER INDO GERMAN TOOL ROOM , AURANGABAD



Low Pressure Die Casting Dies



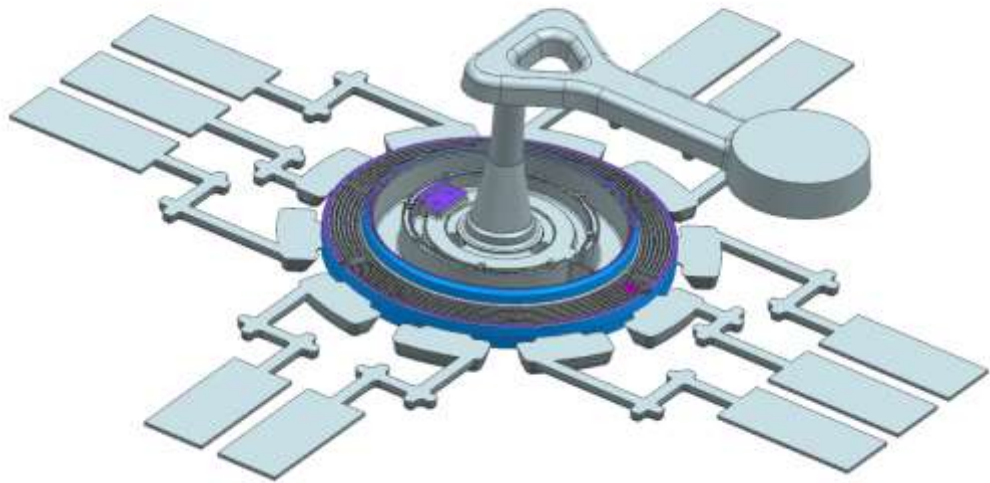


MSME TECHNOLOGY CENTER INDO GERMAN TOOL ROOM , AURANGABAD

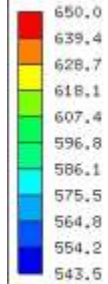


*High Pressure Die Casting Dies
(Centre Feed 3 Plate Mould)*

Clutch Magnetic Coupling Disc



Temperature(deg.C) Time:0.3527(sec) Filled up= 98,0(%) (5354690/5503520)





MSME TECHNOLOGY CENTER
INDO GERMAN TOOL ROOM , AURANGABAD



TRAINING





RESOURCES

CNC Machining Section: Training

- ❑ **Machining Centre - DMG UME 50T - 1 No.**
 - Working Range = X 500, Y 400, Z 400 MM
 - HADENHEIN CONTROL
- ❑ **CNC Tool Room Mill - HASS TM1 - 4 Nos.**
 - Working Range = X 762, Y 400, Z 300
 - HAAS CONTROL
- ❑ **CNC Tool Room Mill-BFzW SURYA VF30 - 2 Nos.**
 - Working Range = X 762, Y 400, Z 300
 - FANUC & SINUM ERIK CONTROL
- ❑ **CNC Tool Room Mill - JYOTI PX30 - 3 Nos.**
 - Working Range = X 762, Y 400, Z 300
 - FANUC & SINUM ERIK CONTROL





RESOURCES

CNC Machining Section: Training

- **CNC Tool Room Lathe - HASS TL1 - 5 Nos.**
 - Working Range: X 200, Z 762 MM
 - CONTROL: HAAS
- **CNC Tool Room Lathe - JYOTHI TL2 - 2 Nos.**
 - Working Range: X 200, Z 762 MM
 - CONTROL: FANUC & SINUMERIK
- **CNC Tool Room Lathe - ACE (TUTOR) - 3 Nos.**
 - Working Range: X 200, Z 762 MM
 - CONTROL: FANUC & SINUMERIK
- **CNC Tool Room Lathe - ACE (JOBBER) - 2 Nos.**
 - Working Range: X 200, Z 762 MM
 - CONTROL: FANUC & SINUMERIK





RESOURCES

CNC Machining Section: Training

- ❑ **CNC Wire EDM – Electronica ECO Cut - 2 Nos.**
 - Working Range: X 250, Y 200, Z 200 MM
 - ELCAM CONTROL
- ❑ **CNC Wire EDM – Electronica SPINT Cut - 1 No.**
 - Working Range: X 250, Y 200, Z 200 MM
 - ELCAM CONTROL
- ❑ **CNC Spark Erosion – Electronica Expert - 1 No**
 - Working Range: X 400, Y 300, Z 300 MM
 - ELCAM CONTROL
- ❑ **ZNC Spark Erosion – Electronica-Smart - 2 Nos.**
 - Working Range: X 250, Y 200, Z 250 MM
 - ELCAM CONTROL





RESOURCES

Welding Section: Training

- **ARC WELDING**
- **CO2 WELDING**
- **TIG WELDING**
- **MIG/MAG WELDING**





MSME TECHNOLOGY CENTER INDO GERMAN TOOL ROOM , AURANGABAD



RESOURCES

CAD / CAM / CAE LABS	20 NOS.
CNC PROGRAMMING LAB	05 NOS.
CNC MACHINING LAB	04 NOS.
HYDRAULICS / PNEUMATICS LAB	02 NO.
PLC PROGRAMMING LAB	02 NO.
SCADA LAB	02 NO.
VLSI LAB	02 NO.
EMBEDDED SYSTEMS LAB	02 NO.
MECHATRONICS / ROBOTICS LAB	02 NOS.
COMP. HARDWARE MAINT. / NETWORKING LABS	04 NOS.
NABL ACCREDITED CALIBRATION LAB	01 NO.
TOOL DESIGN LAB	02 NOS.
WELDING LAB	01 NOS.
CLASS ROOMS	20 NOS.
DESIGN HALL	05 NOS.



TRAINING PROGRAMMS

- LONG TERM COURSES
- MEDIUM TERM COURSES
- SHORT TERM COURSES
- TAILOR MADE COURSES
- COURSES FOR INTERNATIONAL TRAINEES





**MSME TECHNOLOGY CENTER
INDO GERMAN TOOL ROOM , AURANGABAD**



SKILL DEVELOPMENT AREAS

TOOL DESIGN

MANUFACTURING

TOOL & DIE MAKING

CAD/CAM/CAE

CNC PROGRAMMING

CNC MACHINING

WELDING

HYDRAULICS & PNEUMATICS

MECHATRONICS

ROBOTICS

LOW COST AUTOMATION

PLC & SCADA

VLSI & EMBEDDED SYSTEMS

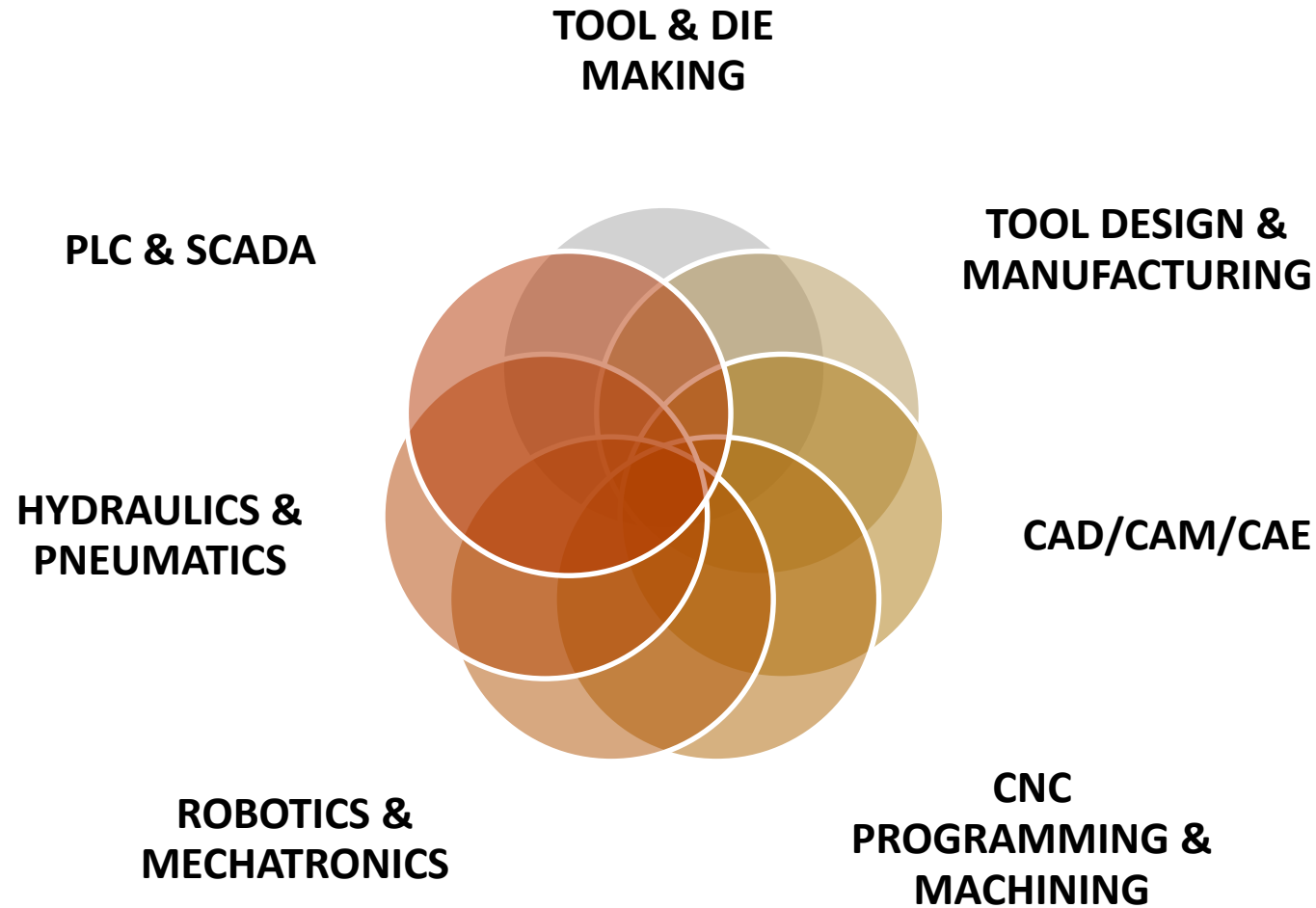
QUALITY CONTROL & CALIBRATION



MSME TECHNOLOGY CENTER INDO GERMAN TOOL ROOM , AURANGABAD



TRAINING AREAS





MSME TECHNOLOGY CENTER INDO GERMAN TOOL ROOM , AURANGABAD



LONG TERM TRAINING PROGRAMS

FOR SSC PASSOUTS (APPROVED BY AICTE / MSBTE)

1. ADVANCE DIPLOMA IN TOOL & DIE MAKING
2. DIPLOMA IN MECHATRONICS
3. CERTIFICATE COURSE IN MACHINIST (TOOL ROOM)

FOR BE / BTECH PASS OUTS (NSQF APPROVED)

1. POST GRADUATE DIPLOMA IN TOOL DESIGN & CAD/CAM
2. POST GRADUATE DIPLOMA IN MECHATRONICS

FOR BE / BTECH / DIPLOMA PASS OUTS (NSQF APPROVED)

1. POST DIPLOMA IN TOOL DESIGN & CAD/CAM
2. POST DIPLOMA IN TOOL & DIE MANUFACTURING
3. POST DIPLOMA IN COMPUTER AIDED ENGINEERING (MANUFACTURING)
4. POST DIPLOMA IN MECHATRONICS

FOR SSC PASS OUTS (NSQF APPROVED)

1. CERTIFICATE COURSE IN CNC TURNING AND MILLING
2. CERTIFICATE COURSE IN TOOL & DIE MAKING
3. CERTIFICATE COURSE IN MACHINE TOOL & WELDING OPERATIONS
4. CERTIFICATE COURSE IN MACHINE MAINTENANCE & WELDING OPERATIONS

FOR ITI PASS OUTS (NSQF APPROVED)

1. ADVANCE CERTIFICATE COURSE IN CNC MACHINING
2. ADVANCE CERTIFICATE COURSE IN MACHINE MAINTENANCE
3. ADVANCE CERTIFICATE COURSE IN TOOL DESIGN AND CAD/CAM
4. ADVANCE CERTIFICATE COURSE IN WELDING OPERATIONS



LONG TERM COURSES

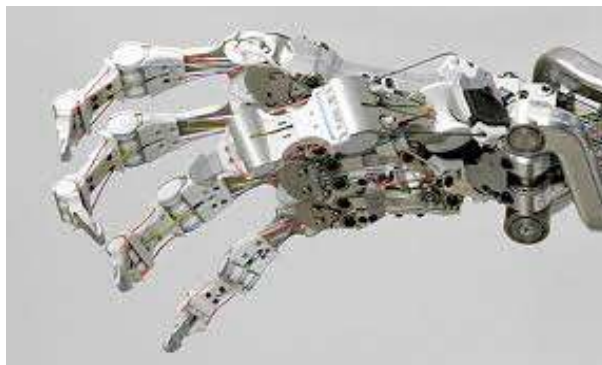
FOR SSC PASSOUTS

ADMISSIONS ON COMMON ENTRANCE EXAM BASIS:

1. ADVANCE DIPLOMA IN TOOL & DIE MAKING
2. DIPLOMA IN MECHATRONICS
3. CERTIFICATE COURSE IN MACHINIST (TOOL ROOM)

ADMISSIONS ON FIRST CUM FIRST SERVE BASIS:

1. CERTIFICATE COURSE IN CNC TURNING AND MILLING
2. CERTIFICATE COURSE IN TOOL & DIE MAKING
3. CERTIFICATE COURSE IN MACHINE TOOL & WELDING OPERATIONS
4. CERTIFICATE COURSE IN MACHINE MAINTENANCE & WELDING OPERATIONS





LONG TERM COURSES (APPROVED BY AICTE & MSBTE)

(ADMISSIONS ON COMMON ENTRANCE EXAM BASIS)

ADVANCE DIPLOMA IN TOOL & DIE MAKING

- DURATION : 4 YRS. (YEARLY ONE BATCH)
- BASIC QUALIFICATION : **SSC PASSOUTS**

DIPLOMA IN MECHATRONICS

- DURATION : 03 YRS. (YEARLY ONE BATCH)
- BASIC QUALIFICATION : **SSC PASSOUTS**

CERTIFICATE COURSE IN MACHINIST (TOOL ROOM)

- DURATION : 2 YRS. (YEARLY ONE BATCH)
- BASIC QUALIFICATION : **SSC PASSOUTS**



MSME TECHNOLOGY CENTER
INDO GERMAN TOOL ROOM , AURANGABAD



LONG TERM COURSES (NSQF APPROVED)

(ADMISSION ON FIRST CUM FIRST SERVE BASIS)

CERTIFICATE COURSE IN CNC TURNING & MILLING

- **DURATION : 12 MONTHS (YEARLY TWO BATCHES)**
- **BASIC QUALIFICATION : SSC PASSOUTS**

CERTIFICATE COURSE IN TOOL & DIE MAKING

- **DURATION : 12 MONTHS (YEARLY TWO BATCHES)**
- **BASIC QUALIFICATION : SSC PASSOUTS**

CERTIFICATE COURSE IN MACHINE TOOL & WELDING OPERATIONS

- **DURATION : 12 MONTHS (YEARLY TWO BATCHES)**
- **BASIC QUALIFICATION : SSC PASSOUTS**

CERTIFICATE COURSE IN MACHINE MAINT. & WELDING OPERATIONS

- **DURATION : 12 MONTHS (YEARLY TWO BATCHES)**
- **BASIC QUALIFICATION : SSC PASSOUTS**



MSME TECHNOLOGY CENTER
INDO GERMAN TOOL ROOM , AURANGABAD



LONG TERM COURSES (NSQF APPROVED)

FOR ITI PASSOUTS

ADMISSION ON FIRST CUM FIRST SERVE BASIS

- ADVANCE CERTIFICATE COURSE IN CNC MACHINING
- ADVANCE CERT. COURSE IN MACHINE MAINTENANCE
- ADVANCE CERT. COURSE IN WELDING OPERATIONS
- ADVANCE CERT. COURSE IN TOOL DESIGN AND CAD/CAM
- ADVANCE CERT. COURSE IN TOOL & DIE MANUFACTURING





LONG TERM COURSES (NSQF APPROVED)

(ADMISSION ON FIRST CUM FIRST SERVE BASIS)

ADVANCE CERTIFICATE COURSE IN CNC MACHINING

- **DURATION : 12 MONTHS (YEARLY TWO BATCHES)**
- **BASIC QUALIFICATION : ITI OR EQUIVALENT**
(TURNER/FITTER/MACHINIST/GRINDER/TOOL & DIE MAKER)

ADVANCE CERTIFICATE COURSE IN MACHINE MAINTENANCE

- **DURATION : 12 MONTHS (YEARLY TWO BATCHES)**
- **BASIC QUALIFICATION : ITI OR EQUIVALENT**
(ELECTRICAL/ELECTRONICS/MMTM/MMTR/FITTER)

ADVANCE CERTIFICATE COURSE IN TOOL & DIE MANUFACTURING

- **DURATION : 12 MONTHS (YEARLY TWO BATCHES)**
- **BASIC QUALIFICATION : ITI OR EQUIVALENT**
(ELECTRICAL/ELECTRONICS/MMTM/MMTR/FITTER)



LONG TERM COURSES (NSQF APPROVED)

(ADMISSION ON FIRST CUM FIRST SERVE BASIS)

ADVANCE CERTIFICATE COURSE IN TOOL DESIGN AND CAD/CAM

- **DURATION : 12 MONTHS (YEARLY TWO BATCHES)**
- **BASIC QUALIFICATION : ITI OR EQUIVALENT
(ELECTRICAL/ELECTRONICS/MMTM/MMTR/FITTER)**

ADVANCE CERTIFICATE COURSE IN WELDING OPERATIONS

- **DURATION : 12 MONTHS (YEARLY TWO BATCHES)**
- **BASIC QUALIFICATION : ITI OR EQUIVALENT
(WELDER/MMTM/MMTR/FITTER)**



LONG TERM COURSES (NSQF APPROVED)

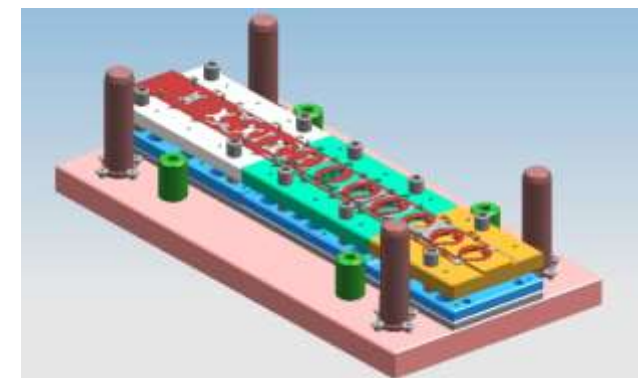
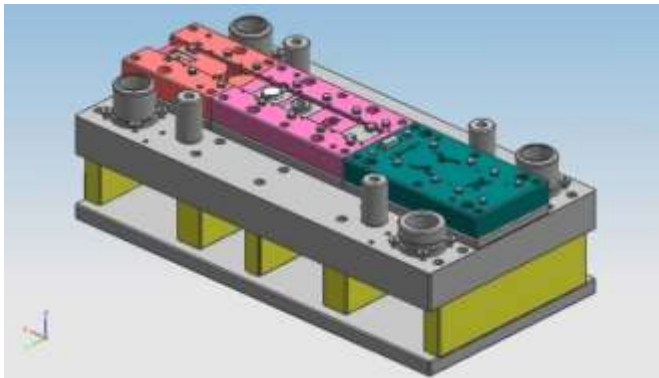
(ADMISSION ON FIRST CUM FIRST SERVE BASIS)

POST GRADUATE DIPLOMA IN TOOL DESIGN & CAD/CAM

- DURATION : 18 MONTHS
- BASIC QUALIFICATION : **DEGREE IN ENGINEERING**
(MECHANICAL/PRODUCTION/AUTOMOBILE) OR EQUIVALENT

POST GRADUATE DIPLOMA IN MECHATRONICS

- DURATION : 18 MONTHS
- BASIC QUALIFICATION : **DEGREE IN ENGINEERING**
(MECHANICAL/ELECTRONICS/ELECTRICAL) OR EQUIVALENT





LONG TERM COURSES (NSQF APPROVED)

(ADMISSION ON FIRST CUM FIRST SERVE BASIS)

POST DIPLOMA IN TOOL DESIGN & CAD/CAM

- DURATION : 12 MONTHS
- BASIC QUALIFICATION : DEGREE / DIPLOMA IN ENGINEERING (MECHANICAL/PRODUCTION/AUTOMOBILE) OR EQUIVALENT

POST DIPLOMA IN TOOL & DIE MANUFACTURING

- DURATION : 12 MONTHS
- BASIC QUALIFICATION : DEGREE / DIPLOMA IN ENGINEERING (MECHANICAL/PRODUCTION/AUTOMOBILE) OR EQUIVALENT

POST DIPLOMA IN COMPUTER AIDED ENGINEERING (MANUFACTURING)

- DURATION : 12 MONTHS
- BASIC QUALIFICATION : DEGREE / DIPLOMA IN ENGINEERING (MECHANICAL/PRODUCTION/AUTOMOBILE) OR EQUIVALENT

POST DIPLOMA IN MECHATRONICS

- DURATION : 12 MONTHS
- BASIC QUALIFICATION : DEGREE / DIPLOMA IN ENGINEERING (MECHANICAL/ELECTRONICS/ELECTRICAL) OR EQUIVALENT



MSME TECHNOLOGY CENTER
INDO GERMAN TOOL ROOM , AURANGABAD



MEDIUM TERM COURSES (NSQF APPROVED)

(ADMISSION ON FIRST CUM FIRST SERVE BASIS)

CERTIFICATE / MASTER CERTIFICATE COURSE IN MECHATRONICS

- **DURATION : 12 / 24 WEEKS**
- **BASIC QUALIFICATION : BE / DME / ITI**

CERTIFICATE / MASTER CERTIFICATE COURSE IN TOOL DESIGN

- **DURATION : 12 / 24 WEEKS**
- **BASIC QUALIFICATION : BE / DME / ITI**

CERTIFICATE / MASTER CERTIFICATE COURSE IN CAD/CAM/CAE

- **DURATION : 12 / 24 WEEKS**
- **BASIC QUALIFICATION : BE / DME / ITI**

CERTIFICATE / MASTER CERTIFICATE COURSE CNC OPERATIONS

- **DURATION : 12 / 24 WEEKS**
- **BASIC QUALIFICATION : BE / DME / ITI**



SHORT TERM TRAINING PROGRAMS

■ CAD

- AUTO CAD (Mech. / Civil)
- AUTO CAD INVENTOR
- SOLIDWORKS
- MASTERCAM
- DELCAM
- CATIA
- PRO-E
- UNIGRAPHICS
- IDEAS
- CIMATRON
- REVIT
- 3DS MAX

■ CAM

- MASTERCAM
- DELCAM
- CATIA
- PRO-E
- UNIGRAPHICS
- CIMATRON
- HYPERMILL

■ CAE

- ANSYS X
- HYPERMESH
- COSMOS
- MOLDFLOW
- PRO MECHANICA WF-5
- NASTRAN
- MATLAB
- STADDPRO
- MOLDEX 3D
- ADSTEFFEN

■ CNC PROGRAMMING

■ LATHE

- FANUC
- SIEMENS
- HAAS

■ MILLING

- HADENHEIN
- FANUC
- SEMENS
- HAAS



SHORT TERM COURSES

LOW COST AUTOMATION :

- BASIC HYDRAULICS
- ELECTRO HYDRAULICS
- ADVANCE HYDRAULICS
- BASIC PNEUMATICS
- ELECTRO PNEUMATICS
- ADVANCE PNEUMATICS
- PLC PROGRAMMING
- SCADA
- AUTOMATION WITH HYDRAULICS USING PLC
- AUTOMATION WITH PNEUMATICS USING PLC





**MSME TECHNOLOGY CENTER
INDO GERMAN TOOL ROOM , AURANGABAD**



TAILOR MADE COURSES

SR. NO.	COUNTRY	POST DIPLOMA / ADVANCE COURSE	DURATION
01	SOUTH AFRICA (9 BATCHES)	TOOL DESIGN TOOL MANUFACTURING CNC MACHINING TRAINERS TRAINING	6-12 MONTHS EACH
02	SRILANKA (2 BATCHES)	DIE & MOULD MFG. CNC PROG. & MACHINING	6-8 WEEKS EACH





**MSME TECHNOLOGY CENTER
INDO GERMAN TOOL ROOM , AURANGABAD**



TAILOR MADE COURSES (INDUSTRIES)

SR. NO.	CUSTOMER	COURSE	DURATION
1	L & T ESCAR LTD. CUTTING TOOL DIVISION	CONVENTIONAL & CNC OPERATIONS (LATHE & MILLING)	4 WEEKS
2	JK FILES (INDIA) LTD. CUTTING TOOL DIVISION	CONVENTIONAL & CNC OPERATIONS & MILLING) (LATHE	4 WEEKS
3	M.A. FORD COMPANY LTD.	CNC MILLING & DRILLING OPERATIONS	3 WEEKS
4	MARUTI UDYOG LTD.	TOOL & DIE DESIGN AND MAINTENANCE	1 MONTH
5	HAL	INTEGRATED COURSE IN CAD/CAM (LEVEL-I) INTEGRATED COURSE IN CAD/CAM (LEVEL-I) CNC MACHING & MAINTENANCE	4 WEEKS 4 WEEKS 4 WEEKS
6	INA BEARINGS LTD.	CNC MACHING (CNC LATHE, MILLING, EDM & WEDM)	2 WEEKS
7	L&T E ENGINEERINGS SOLUTIONS LTD.	INTEGRATED COURSE IN CAD/CAM/CAE INTEGRATED COURSE IN CAD/CAM	3 MONTHS 2 MONTHS
8	JOHNSON & JOHNSON LTD.	BASIC PNEUMATICS, ELECTRO PNEUMATICS & PLC PROGRAMMING BASIC & ADVANCE PNEUMATICS AND PLC PROGRAMMING	4 WEEKS 4 WEEKS



**MSME TECHNOLOGY CENTER
INDO GERMAN TOOL ROOM , AURANGABAD**



TAILOR MADE COURSES (INSTITUTES)

SR. NO.	CUSTOMER	COURSE	DURATION
1	MSBTE, MUMBAI	CAD/CAM/CAE	2 WEEKS EACH
		TOOL DESIGN & CAD	
		CNC PROGRAMMING & MACHINING (L&M)	
		CNC MAINTENANCE & OPERATIONS	
		HYDRAULICS & PNEUMATICS	
2	DVET (ITI), AURANGABAD	TRAINERS TRAINING PROGRAMME	2 WEEKS EACH
		CAD/CAM	
		LOW COST AUTOMATION	
		CNC PROG. & MACHINING	
3	MGM COLEGE OF ENGINEERING, NANDED	TOOL DESIGN	20 WEEKS 4 WEEKS 4 WEEKS 4 WEEKS
		M.E.DSSERTATION PROG.	
		CAD & CNC PROG. & MACHINING	
		CONT. CAD/CAM MODULES (PT)	
4	GOVT. ENGINEERING COLLEGE, AURANGABAD	CAD/CAM/CAE	4 WEEKS EACH
		LOW COST AUTOMATION	
		CNC PROG. & MACHINING	
		TOOL DESIGN & CAD	
5	GOVT. ENGINEERING COLLEGE, JALGAON	CAD/CAM/CAE	4 WEEKS EACH
		LOW COST AUTOMATION	
		CNC PROG. & MACHINING	
		TOOL DESIGN & CAD	
6	DR B.A.M. UNIVERSITY,	CNC PROG. & MACHINING	4 WEEKS EACH
		LOW COST AUTOMATION	
7	DR B.A. TECH. UNIVERSITY, LONERE	CAD/CAM/CAE	4 WEEKS EACH
		CNC PROG. & MACHINING	
		TOOL DESIGN & CAD	



**MSME TECHNOLOGY CENTER
INDO GERMAN TOOL ROOM , AURANGABAD**



SKILL DEVELOPMENT TRAINING PROGRAMS SPONSORED BY

MINISTRY OF MSME, GOVERNMENT OF INDIA (MSME)

MINISTRY OF DEVELOPMENT OF NORTH EASTERN REGION (DONER)

MAHARASHTRA STATE BOARD OF TECHNICAL EDUCATION (MSBTE)

MADHYA PRADESH COUNCIL OF EMPLOYMENT & TRAINING (MAPCET)

TRIBAL DEVELOPMENT DEPARTMENT, GOVT. OF MAHARASHTRA (TDD)

SOCIAL JUSTICE & EMPOWERMENT DEPT., GOVT. OF M.S. (BARTI)

INDUSTRIES / INSTITUTES



**MSME TECHNOLOGY CENTER
INDO GERMAN TOOL ROOM , AURANGABAD**



STATUS OF SPONSORED TRAINING PROGRAMS (YEAR 2008-2017)

SR. NO.	SPONSORING AGENCY	TRAINEES TRAINED DURING THE YEAR										TOTAL
		2007-08	2008-09	2009-10	2010-11	2011-12	2012-13	2013-14	2014-15	2015-16	2016-17	
1	MINISTRY OF MSME, GOVERNMENT OF INDIA	0	0	110	250	450	575	575	850	375	650	3835
2	MAHARASHTRA STATE BOARD OF TECHNICAL EDUCATION (MSBTE)	12	0	31	0	0	0	97	0	0	0	140
3	MINISTRY OF DEVELOPMENT OF NORTH EASTERN REGION (DONER)	183	239	221	397	177	130	212	0	0	0	1376
4	MADHYA PRADESH COUNCIL OF EMPLOYMENT & TRAINING (MAPCET)	0	0	77	49	45	41	0	146	47	0	405
5	TRIBAL DEVELOPMENT DEPT., GOVT. OF MAHARASHTRA	0	0	0	0	0	299	242	408	375	275	1300
6	DR. BABASAHEB AMBEDKAR RESEARCH & TRAINING INSTITUTION, PUNE (BARTI)	0	0	0	0	0	0	185	112	0	0	297
TOTAL		195	239	439	696	672	746	1311	1516	797	925	7353



**MSME TECHNOLOGY CENTER
INDO GERMAN TOOL ROOM , AURANGABAD**



TRAINING PROGRAMS OFFERED TO INSTITUTES

SR. NO.	NAME OF INSTITUTE
1	GOVT. COLLEGE OF ENGINEERING, AURANGABAD
2	GOVT. COLLEGE OF ENGINEERING, JALGAON
3	JAWAHARLAL NEHRU COLEGE OF ENGINEERING, AURANGABAD
4	MGM COLLEGE OF ENGINEERING, NANDED
5	AMRUTVAHINI COLLEGE OF ENGINEERING SANGAMNER
6	N.B.NAWALE SINHGADH COLLEGE OF ENGINEERING, SOLAPUR
7	PROF. RAM MEGHE INSTITUTE OF RESEARCH & TECHNOLOGY, BADNERA
8	PES COLLEGE OF ENGINEERING AURANGABAD
9	TERNA COLLEGE OF ENGINEERING, OSMANABAD
10	PADMASHRI DR.VITHALRAO VIKHE PATIL COLLEGE OF ENGINEERING,LONI
11	SVERI'S COLLEGE OF ENGINEERING, PANDHARPUR
12	HI-TECH INSTITUTE OF TECHNOLOGY, AURANGABAD
13	MIT POLYTECHNIC, AURANGABAD
14	GRAMIN POLYTECHNIC, NANDED
15	INDIRA POLYTECHNIC , NANDED



MSME TECHNOLOGY CENTER
INDO GERMAN TOOL ROOM , AURANGABAD



TRAINING PROGRAMS OFFERED TO INDUSTRIES

SR. NO.	NAME OF INDUSTRY
1	L & T LTD., E- ENGINEERING SOLUTIONS, BARODA
2	L & T LTD., CUTTING TOOL DIVISION, MUMBAI
3	JK FILES LTD, MUMBAI
4	M.A FORD & COMPANY LTD., MUMBAI
5	HAL., NASIK & KORAPUT
6	NAVAL ARMAMENT DEPOT (NAD), ALWAYS - KERALA
7	NADP , NAGPUR
8	MARUTI UDYOG LTD., NEW DELHI
9	MAHINDRA FORGINGS LTD, PUNE
10	KIRLOSKAR PNEUMATICS CO. LTD, PUNE
11	BHARAT FORGE LIMITED, PUNE
12	EATON TECHNOLOGIES, PUNE
13	HIRSCHVOGEL KALYANI INDIA PVT. LTD., PUNE
14	TVS INDUSTRIES GROUP, CHENNAI
15	GREAVES LTD., AURANGABAD
16	LOMBARDINI LTD., AURANGABAD
17	JOHNSON & JOHNSON LTD., AURANGABAD
18	FORBES LIMITED, AURANGABAD
19	COSMO FILMS LIMITED, AURANGABAD
20	VIDEOCON INDUSTRIES LTD, AURANGABAD
21	VARROC ENGINEERING, AURANGABAD
22	NRB BEARINGS LIMITED, AURANGABAD
23	EPCOS LIMITED, NASHIK
24	VARROC ENGINEERING, AURANGABAD
25	ASB INTERNATIONAL LIMITED, AMBERNATH, THANE
26	XYLEM LIMITED, BARODA



MSME TECHNOLOGY CENTER INDO GERMAN TOOL ROOM , AURANGABAD



CUSTOMERS - PLACEMENT





MSME TECHNOLOGY CENTER INDO GERMAN TOOL ROOM , AURANGABAD



CUSTOMERS - PLACEMENT



Volkswagen



SIEMENS





MSME TECHNOLOGY CENTER
INDO GERMAN TOOL ROOM , AURANGABAD



CUSTOMERS - PLACEMENT

NAME OF ORGANISATION	ORIGIN COUNTRY
FEMCO INDIA	TAIWAN
HONEYWELL TURBO TECH. LTD., PUNE	US
SECO TOOLS (INDIA) PVT. LTD., PUNE	US
MAN B & W DIESEL INDIA LTD., AURANGABAD	GERMANY
MERCEDES INDIA, PUNE	GERMANY
ATLAS COPCO LTD., PUNE	SWEDEN
JOHANSON & JOHANSON LTD, AURANGABAD	US
PIERBURG INDIA PVT. LTD., PUNE	UK
JOHNDEERE, PUNE	US
BEHR INDIA LTD., CHAKAN PUNE	GERMANY
ENA BEARINGS	GERMANY
FIAT	US
BOSCH CHASIS SYSTEM, JALGAON	GERMANY
CAN PACK INDIA PVT LTD. AURANGABAD	POLAND
LEGRAND LTD., JALGAON	FRANCE
SEMENCE GROUP	GERMANY
INTERNATIONAL COMBUSTION (I) LTD., A'BAD	UK



MSME TECHNOLOGY CENTER
INDO GERMAN TOOL ROOM , AURANGABAD



CUSTOMERS - PLACEMENT

NAME OF ORGANISATION	ORIGIN COUNTRY
SEMENCE GROUP	GERMANY
INTERNATIONAL COMBUSTION (I) LTD., A'BAD	UK
KAIZAN PLSTO MOLDS PVT. LTD., A'BAD	JAPAN
INNOVA RUBBERS PVT LTD NASHIK	TAIWAN
MINDA GROUP	JAPAN
HELVOET INDIA PVT. LTD., PUNE	SINGAPORE
LOMBARDINI INDIA PVT. LTD.	US
ATLANTIES PVT. LTD. PUNE	US
WHILRPOOL INDIA PVT. LTD.	US
EMERSON INNOVATION CENTRE, PUNE	US
HELVOET RUBBER & PLASTIC TECH.(I) PVT. LTD.	SINGAPORE
FAG BEARINGS INDIA LIMITED, VADODARA	GERMANY
ELRING KLINGER INDIA LTD.	GERMANY
HELVOET RUBBER & PLASTIC TECH.(I) PVT. LTD.	SINGAPORE
FAG BEARINGS, BARODA	GERMANY



MSME TECHNOLOGY CENTER INDO GERMAN TOOL ROOM , AURANGABAD



CUSTOMERS - PLACEMENT

Sr. No.	Name of MSME Employers	Other Employers
1	ASPIRE MOULDING & TOOLING PVT. LTD., AHMEDNAGAR	EMERSON INNOVATION CENTER, PUNE
2	AUTO CLUSER, PUNE	ENDURANCE TECHNOLOGIES PVT LTD., AURANGABAD
3	KALYANI FORGING LTD., PUNE	FORCE MOTORS LTD., PUNE
4	GRIND MASTER MACHINES PVT. LTD., AURANGABAD	JAI BHARAT MARUTI LTD., GURGAON
5	AKASH DIE CASTING PVT. LTD., PUNE	VASANTA TOOLS CRAFTS PVT. LTD., HYDRABAD
6	LAXMI AGNI FORGINGS PVT. LTD., AURANGABAD	VARROC ENGINEERING LTD., AURANGABAD
7	SAVITRI AUTOMATION, PUNE	MAHINDRA FORGING LTD., PUNE
8	EXCEL-R ENGG. PVT. LTD., AURANGABAD	DRESSER-RAND INDIA LTD., PUNE
9	NARSIMHA AUTO COMPONENTS PVT. LTD., AURANGABAD	BIRLA PRECISION LTD., AURANGABAD
10	NHK SPRINGS LTD., AURANGABAD	SPACO TECHNOLOGIES LTD., PUNE
11	TECHNOCRAFT INDUSTRIES(INDIA)LTD., MUMBAI	VIDEOCON INDUSTRIES LTD., AURANGABAD
12	COMAU (I) PVT. LTD., PUNE	MAHINDRA HINODAYA INDUSTRIES LTD., PUNE
13	WOOSHIN ENGG. PVT. LTD., PUNE	BOSCH INDIA LTD., JALGAON
14	MALLIKARJUN FORGING PVT. LTD., PUNE	PMT MACHINES, PUNE
15	JINEN CORPORATION, UMBERGAON, GUJRAT	MAHINDRA & MAHINDRA LTD., SATPUR, NASHIK
16	KAPADIA TOOLS (ARKIN VENTURES PVT. LTD.), NASHIK	ROSE INDIA LTD.,MUMBAI
17	MIKRONIX GAUGES PVT. LTD., AURANGABAD	AURANGABAD ELECTRICALS LTD., AURANGABAD
18	S V INDUSTRIES, AURANGABAD	CANPACK (I) LTD., AURANGABAD
19	UJJAL ELECTRICAL, AURANGABAD	PHONIX MECHANO, PUNE
20	PYN PRECISION ENGINEERING, PUNE	i-GATE PATNI LTD., PUNE
21	PRIME INDUSTRIES LTD., NASHIK	HERO HONDA MOTORS LTD., GURGAON
22	UNION GAUGES, PUNE	TATA TECHNOLOGIES LTD., PUNE
23	VINOD ENTERPRISES, AURANGABAD	JCB LTD., PUNE
24	PORTESCAPE LTD., MUMBAI	COSMO FILM, AURANGABAD
25	MICRO TURNERS, PUNCHKULA, HARYANA	HONEYWELL TURBO TECHNOLOGIES LTD., PUNE
26	JYOTI CERAMICS, NASHIK	JOHNSON & JOHNSON LTD., AURANGABAD
27	KHAKRE ENGG., JALNA	BHARAT FORGE LTD., PUNE
28	RELIABLE AUTOTECH PVT. LTD., CHAKAN, PUNE	NRB BEARINGS LTD., AURANGABAD



MoU / TIEUP

- **MAHARASHTRA STATE RURAL LIVELIHOODS MISSION, MINISTRY OF RURAL DEVELOPMENT UNDER DDU GKY SCHEME.**
- **TWI - TRAINING WELDING INSTITUTE, UK**
- **SHIVAJI UNIVERSITY, KOLHAPUR**
- **SAVITRIBAI PHULE UNIVERSITY, PUNE**
- **BAMU - DR. BABASAHEB AMBEDKAR MARATHWADA UNIVERSITY, A'BAD**
- **NITTTR, BHOPAL**
- **TDD - TRIBAL DEVELOPMENT DEPARTMENT, GOVT. OF MAHARASHTRA**
- **MAPCET - MADHYA PRADESH COUNCIL OF EMPLOYMENT & TRAINING**
- **INDUSTRIES & INSTITUTES**



**MSME TECHNOLOGY CENTER
INDO GERMAN TOOL ROOM , AURANGABAD**



MoU / O/o DC MSME

- **SAMSUNG**
- **SAP**
- **AICTE**



FUTURE PLANS

PROPOSED EXPANSION

- **PRODUCT DESIGN & DEVELOPMENT**
- **COMPUTER AIDED ENGINEERING**
- **MECHATRONICS**
- **ROBOTICS**
- **PROCES AUTOMATION**
- **LOW COST AUTOMATION**
- **AUTOTRONICS**
- **CNC MICRO MACHINING CENTRE**
- **COMPUTER INTEGRATED MANUFACTURING**
- **ADVANCE WELDING WITH AUTOMATION (LASER, SUB MERGE, SPOT, RESISTANCE WELDING)**



MSME TECHNOLOGY CENTER INDO GERMAN TOOL ROOM , AURANGABAD



FUTURE PLANS

SETTING UP INTELLECTUAL
PROPERTY FACILITATION
CENTRE.

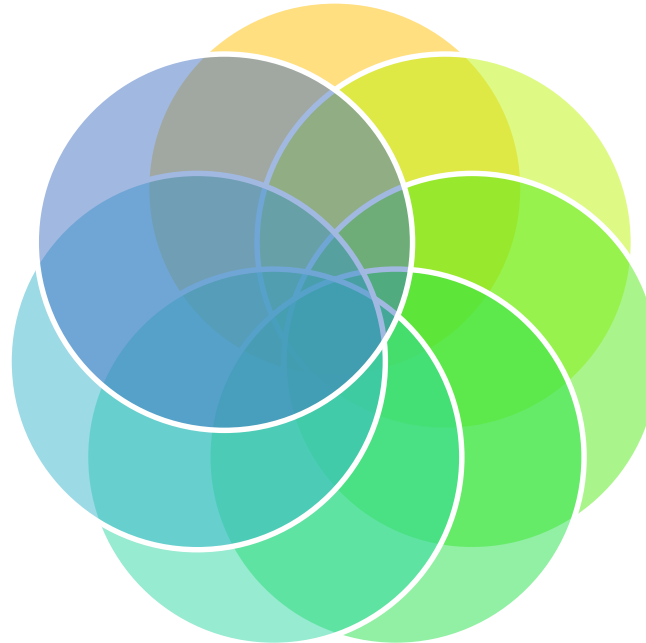


TIEUP WITH LEADING
INDUSTRIES /
INSTITUTES.

TIE UP WITH TWI, UK
FOR INDUCTION OF
ADVANCE WELDING
TECHNOLOGY

TRAINERS' TRAINING
PROGRAMME & SKILL
UPGRADATION PROGRAMMES
FOR MSME EMPLOYEES.

INITIATIVES FOR
SETTING UP OF
INCUBATORS



DEVELOPMENT AND
SUPPORTING
ENTREPRENEURS

CENTER OF EXCELLENCE
IN TRAINING &
MANUFACTURING
WITH AUTOMATION



MSME TECHNOLOGY CENTER INDO GERMAN TOOL ROOM , AURANGABAD



FUTURE PLANS

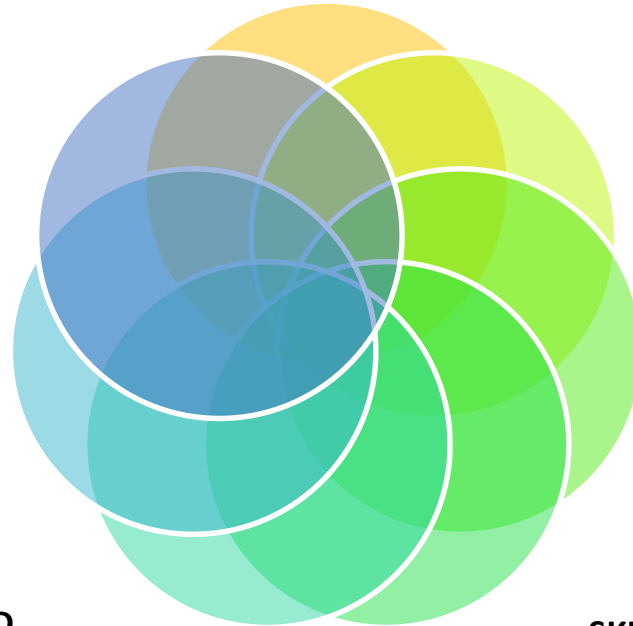
**INITIATIVES FOR
HANDHOLDING SUPPORT
TO POLYTECHNICS AND
ITI'S.**

**WIDENING THE RAGE OF
OUTREACH PROGRAMMES
IN RURAL & URBAN
AREAS.**

**CISCO CERTIFICATE
NETWORK ASSOCIATES /
PROFESSIONALS**

DIGITAL ACADEMY

**TRAINING SKILLED
MANPOWER IN THE SEMI
URBAN AND RURAL
AREAS.**



**SKILL DEVELOPMENT
TRAINING
PROGRAMMES FOR
NON ENGINEERING
GRADUATES.**

**SKILL DEVELOPMENT
TRAINING PROGRAMMES
FOR JUNIOR COLLEGES
AND SCHOOLS PASS OUTS
& DROP OUTS.**



**MSME TECHNOLOGY CENTER
INDO GERMAN TOOL ROOM , AURANGABAD**



SUBCENTRES

PUNE

MSME-TR – MSME DI CAD/CAM TRAINING CENTRE

Swargate, Shankarshet Road,

Near PMT Workshop, **Pune – 411 037**

Phone: (020) 24440861 Fax : (020) 24440862

Email: igtr_pune@yahoo.co.in

MUMBAI

MSME DI – MSME-TR CAD/CAM TRAINING CENTRE

Saki Naka, Kurla–Andheri Road, **Mumbai – 400 072.**

Phone: (022) 28576090, 28573091, Fax No. (022)28570663

Email: smallind@vsnl.com

NAGPUR

**INDO GERMAN TOOL ROOM, AURANGABAD
EXTENSION CENTRE NAGPUR**

E-142, MIDC HINGANA, **Nagpur - 440 006**

Phone: 0712-6450688, 2513095, Fax: 0712-2511985

Email: training_ngp@igtr-aur.org



MSME TECHNOLOGY CENTER INDO GERMAN TOOL ROOM , AURANGABAD



THANKS